



WaterFurnace.
Smarter from the Ground Up™

Geothermal Comfort System

3 Series 300A11





The 3 Series

A great balance of value and performance

WaterFurnace 3 Series® units benefit from technology that's been refined through 30 years of research, engineering advancements, and manufacturing experience—all at a great price point.

The dual capacity 300A11 offers efficiencies reaching 22.3 EER for cooling and 4.1 COP for heating in closed loop conditions (27.3 EER and 4.5 COP for open loop). These ratings are significantly greater than any ordinary conditioning system. Our Aurora communicating controls work in unison with system components to provide simple setup, troubleshooting, and diagnosis for the contractor, in addition to providing confidence and peace of mind for you.

All 3 Series units are ENERGY STAR® rated and were engineered in the HVAC industry's only in-house *EPA/ENERGY STAR Recognized Laboratory*. Best of all, 3 Series units use the stored energy in your yard to provide savings of up to 70% on heating, cooling, and hot water.



Why Geothermal?

Geothermal is perfect for those who want to dramatically reduce their energy usage, save money on bills, and enjoy a more even, consistent comfort in their home. Over the next few pages we'll tell you a little more about geothermal and show you how you can benefit from a technology that's *Smarter from the Ground Up™*.

Comfort that gives back

Geothermal's benefits

Geothermal heat pumps are not only the most comfortable way to heat and cool, they're also the most cost effective. They're versatile enough to excel in almost any home or any environment, and you'll find geothermal in more than 1 million households across Canada and all 50 U.S. states. They can be scaled for single-family homes to entire college campuses. In fact, we heat and cool our entire 110,000 square-foot headquarters with WaterFurnace equipment. Here are a few reasons why geothermal is one of the fastest growing technologies available for your home.

QUALIFIES ✓ GEO TAX CREDIT

Extra savings for geothermal

A 30% tax credit on equipment and installation costs is currently available to U.S. homeowners who install an ENERGY STAR rated geothermal system. The credit can be used to offset both AMT and regular income taxes and can be carried forward into future years. The 30% tax credit will last until the end of 2019 where it is scheduled to decrease in amount each year through 2021. Hurry and act now for the most savings!

30% THROUGH 2019	26% THROUGH 2020	22% THROUGH 2021
-------------------------------	-------------------------------	-------------------------------



Energy Efficient

WaterFurnace systems are rated number one in energy efficiency because they can deliver over four units of energy for every one unit of electrical energy used. Compare that to even the best ordinary system that delivers less than one unit of energy for every unit it consumes. That translates into an efficiency rating exceeding 400%, compared to the most efficient gas furnace which rates only 98%.



Cost Effective

Because of the extraordinary efficiency of a WaterFurnace system, most homeowners save more on monthly bills than they pay for the system when installation costs are added to the mortgage. Any added investment over traditional equipment is usually recovered in just a few years, and many homeowners see a return on investment of 10-20% over the life of the system.



Clean

Large, high efficiency MERV 8 filters are available with our units to provide exceptional indoor air quality and protect your family from dust and pollen. WaterFurnace units also circulate air more often, further filtering the air.



Environmentally Friendly

Geothermal systems are recognized by the United States Environmental Protection Agency as the most environmentally friendly, cost effective and energy efficient heating and cooling technology available. These systems also minimize the threats of acid rain, air pollution, the greenhouse effect and global warming—problems directly linked to the burning of fossil fuels. In fact, installing a single geothermal unit is the environmental equivalent of planting 750 trees or removing two cars from the road.



Flexible

One compact WaterFurnace unit provides heating, central air conditioning, and supplemental domestic hot water for your entire home. Horizontal and vertical configurations are available for a wide range of home applications, including newly constructed as well as existing homes. No matter what climate you live in, your WaterFurnace system will deliver.



Safe

Because natural gas, propane, or oil isn't required to operate a WaterFurnace system, there's no combustion, flames, or fumes and no chance of carbon monoxide poisoning.



Quiet

WaterFurnace systems don't require noisy outdoor units that can disturb your peaceful surroundings or create unsightly additions to your home's appearance. We've taken great steps in keeping your unit as quiet as possible.



Reliable

Because geothermal units aren't subjected to the punishing effects of outdoor weather or fuel combustion, they last longer than nearly any other heating and cooling system. According to the American Society of Heating, Refrigerating, and Air-Conditioning Engineers, geothermal units have an average equipment life of 25 years while the underground loop system has a rated material life of more than 100 years. Ordinary air conditioners, furnaces and heat pumps are rated for only 12-18 years.



Comfortable

WaterFurnace units are designed to run more often to provide stable temperatures throughout the home and help eliminate hot or cold spots. To achieve even more precise control over temperatures, add our IntelliZone zoning system.

Using the earth to heat & cool

The geothermal difference

A geothermal heat pump (GHP) taps into the renewable solar energy stored in the ground to provide savings up to 70% on bills. Using a series of underground pipes, it exchanges heat with the earth instead of outdoor air. While air temperatures can vary greatly from day to night or winter to summer, the temperature just a few feet below the earth's surface stays an average 55°-70°F year-round.

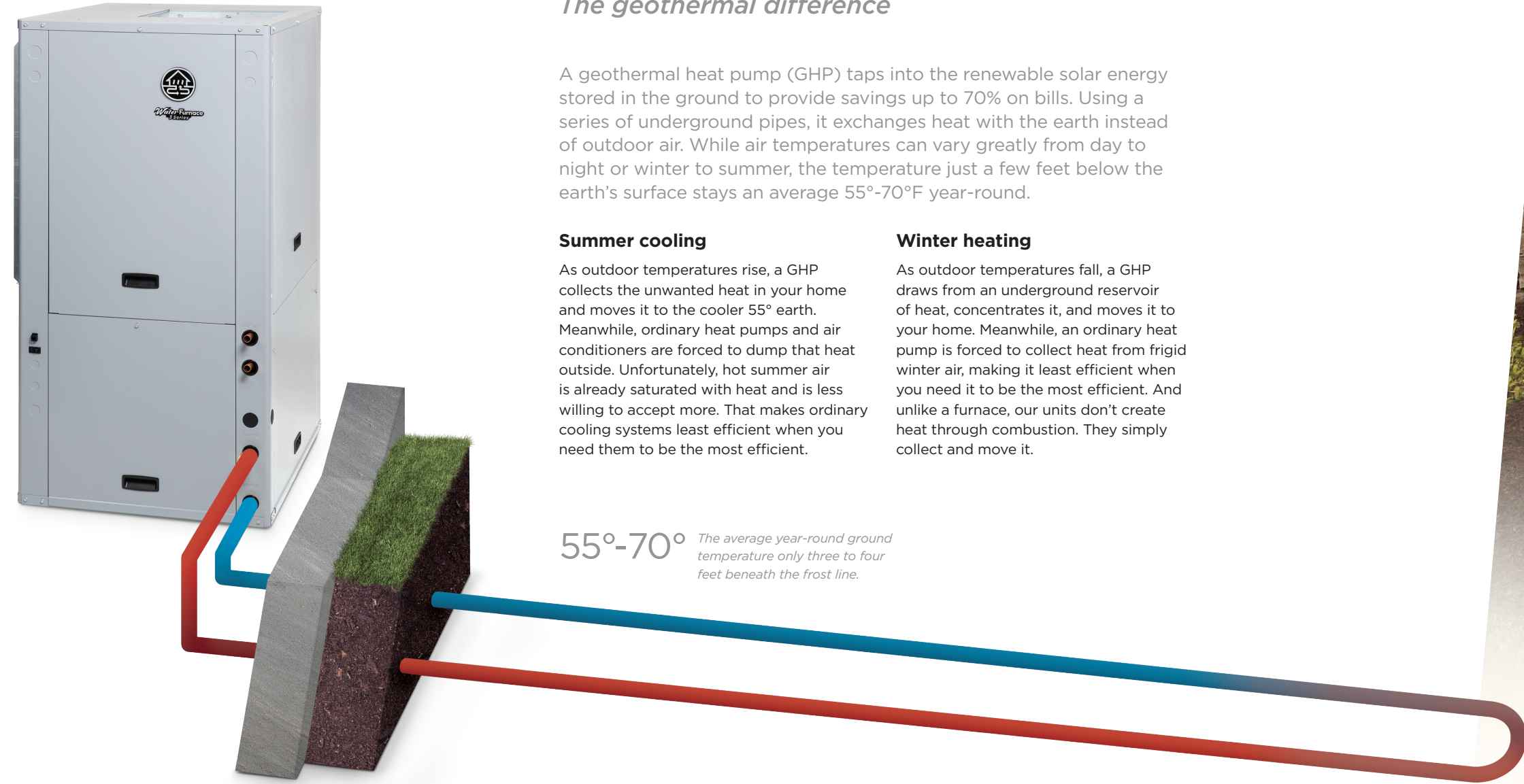
Summer cooling

As outdoor temperatures rise, a GHP collects the unwanted heat in your home and moves it to the cooler 55° earth. Meanwhile, ordinary heat pumps and air conditioners are forced to dump that heat outside. Unfortunately, hot summer air is already saturated with heat and is less willing to accept more. That makes ordinary cooling systems least efficient when you need them to be the most efficient.

Winter heating

As outdoor temperatures fall, a GHP draws from an underground reservoir of heat, concentrates it, and moves it to your home. Meanwhile, an ordinary heat pump is forced to collect heat from frigid winter air, making it least efficient when you need it to be the most efficient. And unlike a furnace, our units don't create heat through combustion. They simply collect and move it.

55°-70° *The average year-round ground temperature only three to four feet beneath the frost line.*



Traditional Air Conditioner

Summer air is already saturated with heat and is less willing to accept more. Thanks to the constant temperature of the earth, geothermal is more than twice as efficient at cooling than any ordinary heat pump or air conditioner.



Fossil Fuel Furnace

Ordinary furnaces return less than 98¢ of heat for each dollar spent burning polluting fossil fuels, while a geothermal system returns up to five dollars of heat for each dollar spent on electricity. That's because our units don't create heat through combustion. They simply collect and move it.

Note: Illustration represents how geothermal works and is not to scale. Loops are generally 4-6 feet below the earth's surface and between 150-400 feet long.

The heart of a geothermal system

Geothermal earth loops

A geothermal system uses a series of underground pipes called a “loop.” The earth loop eliminates the need for fossil fuels. It’s the heart of a geothermal system and its biggest advantage over ordinary heating and cooling technologies. The type of loop used is based on available land space and installation costs for specific areas.



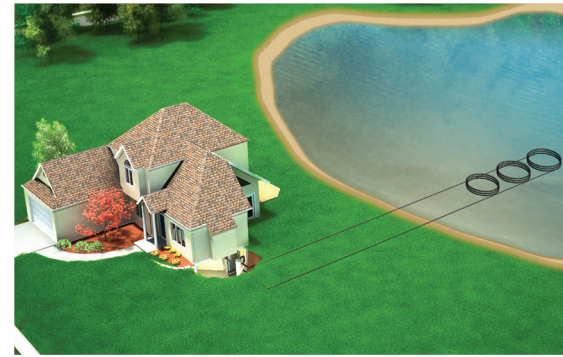
Horizontal Loop

Used where adequate land is available, horizontal loops involve one or more trenches that are dug using a backhoe or chain trencher. High density polyethylene pipes are inserted, and the trenches are backfilled. A typical home requires 1/4 to 3/4 of an acre for the trenches.



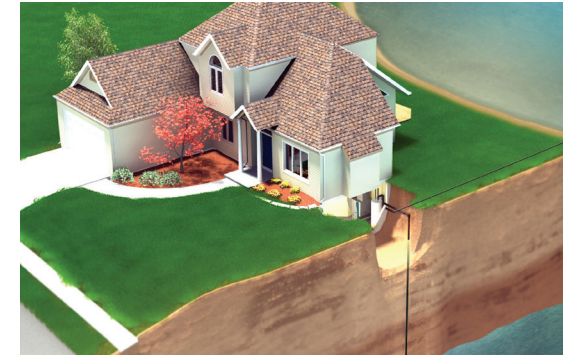
Vertical Loop

Vertical loops are used when space is limited. Holes are bored using a drilling rig, and a pair of pipes with special u-bend fittings is inserted into the holes. A typical home requires three to five bores with about a 15-foot separation between the holes.



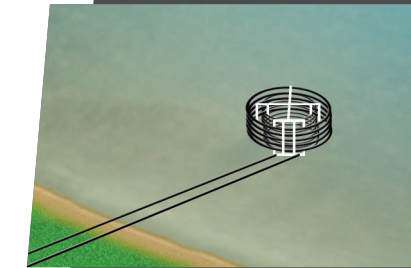
Pond Loop

If an adequately sized body of water is close to your home, a pond loop can be installed. A series of coiled, closed loops are sunk to the bottom of the body of water. A 1/2 acre, 8-foot-deep pond is usually sufficient for the average home.



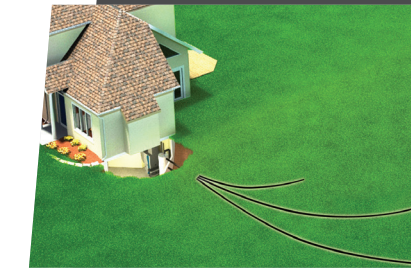
Open Loop

An open loop is used where there is an abundant supply of quality well water. The well must have enough capacity to provide adequate flow for both domestic use and the WaterFurnace unit. 3 Series units require 3-10 GPM, depending on size.



HyperLoop - Pond

Perfect for pond and lake geothermal applications, this prefabricated and compact loop greatly reduces loop build and installation time.



Directional Bore

Perfect for homeowners who need minimal landscape disruption, these loop types take advantage of the space available below ground. A directional bore loop can be installed either vertically or horizontally depending on yard space.

Technology refined through 30 years of research and engineering advancements

The 3 Series value

WaterFurnace is dedicated to providing you with safe, reliable and energy efficient products that save money while conserving our resources. The 3 Series upholds the standards we've set over three decades and the trust associated with the WaterFurnace name and offers it all at a great value. Every unit is computer run-tested to ensure flawless performance at start-up—and in the unlikely event your equipment needs service, they're backed by a great parts and labor allowance warranty.



Inspired engineering for value and reliability

Components of the 3 Series



Design Components:

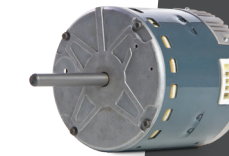
- 1. Cabinet:** The cabinet comes with a professional grade finish for long-lasting beauty and protection. The system is fully insulated for quiet operation with cleanable foil-backed insulation.
- 2. Hot Water Generation:** With an optional hot water assist, the 3 Series preheats your water and delivers it to your water heater. The longer the unit operates, the greater the amount of hot water generated. In heating mode, the hot water is generated at the efficiency of the unit; while in cooling, waste heat is recovered and hot water is free.
- 3. All-Aluminum Air Coil:** 3 Series units feature aluminum air coils for durability and extended system life.
- 4. Aurora Interface Diagnostic Port:** WaterFurnace is the first to offer an external communication port, which allows service and diagnosis of our units without ever having to open them.
- 5. ThermaShield™:** Our exclusive coaxial heat exchanger coating protects against condensation for temperatures below 50°F, extending its life.



6. Two-Stage Compressor: For superb efficiency and reliability, all 3 Series units utilize Copeland Scroll UltraTech™ compressors. All compressors are double isolation mounted for extra quiet operation.



7. Aurora Base Control: WaterFurnace's family of communicating controls, Aurora, is featured in the 3 Series. Setup, troubleshooting, and diagnosis are simplified with Aurora making service much easier and faster for the technician.



8. 5-Speed ECM Blower Motor: The high efficiency 5-Speed ECM blower motor comes standard with the 300A11 to provide great comfort and quiet operation.



9. Filter and Filter Rack: Options include MERV 8 filter with rack or rails, while high-strength duct flanges come standard.

ISO/AHRI 13256-1

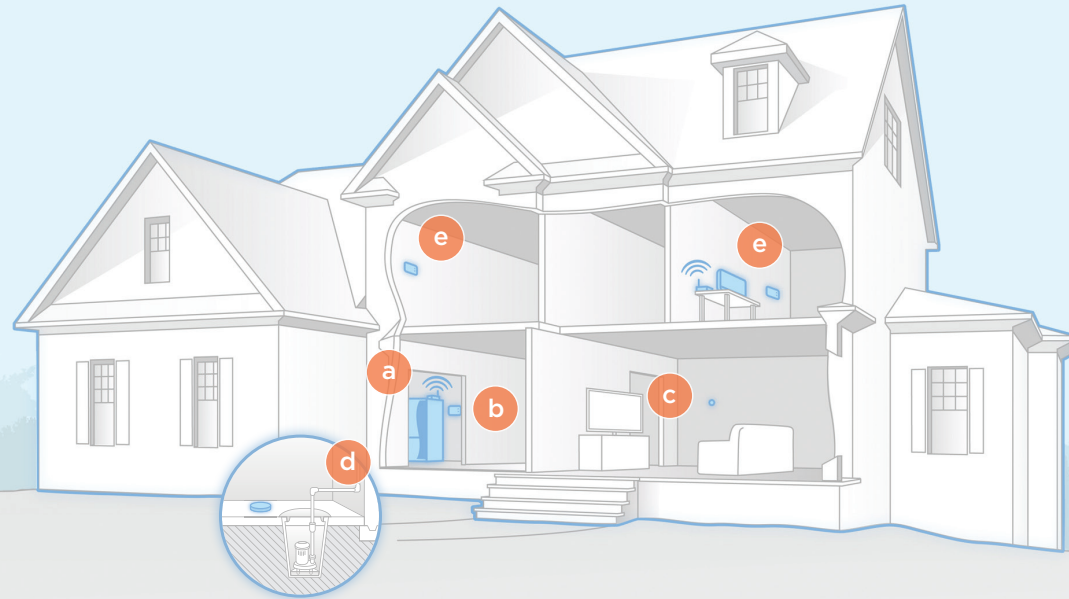
Model & Size	Closed Loop		Open Loop		
	Cooling EER	Heating COP	Cooling EER	Heating COP	
024	Full Load	15.6	3.8	20.6	4.4
	Part Load	20.6	4.1	24.4	4.5
036	Full Load	15.5	3.6	19.7	4.2
	Part Load	21.5	4.1	25.5	4.5
048	Full Load	16.0	3.7	21.8	4.3
	Part Load	22.0	4.1	27.3	4.5
060	Full Load	16.5	3.4	20.7	4.0
	Part Load	22.3	3.9	26.2	4.2
072	Full Load	16.4	3.5	20.8	4.1
	Part Load	21.9	3.7	25.3	4.1



Finishing touches

Accessories

Choosing the right accessories can greatly improve the comfort levels in your home and can even allow you to expand the functions of your existing WaterFurnace system. Each item has been designed to work hand in hand with your system to allow flawless and convenient operation. Here are some of our most popular accessories. Visit waterfurnace.com for more.



Symphony Web-Enabled Home Comfort Platform

Imagine a platform that can provide detailed feedback of your comfort system in real-time and the tools to control it all from any web-enabled smart phone, tablet, or computer. That's Symphony. Symphony is a Wi-Fi based comfort platform that's unsurpassed in its ease of use, feature set and the level of information it provides. Symphony marries the Aurora controls of a WaterFurnace geothermal system with our WebLink router, giving you access to the comfort system from practically anywhere. Symphony is cloud-based so there's no software to install and provides control over the entire geothermal system-not just the temperature as in other 'smart thermostat' systems.

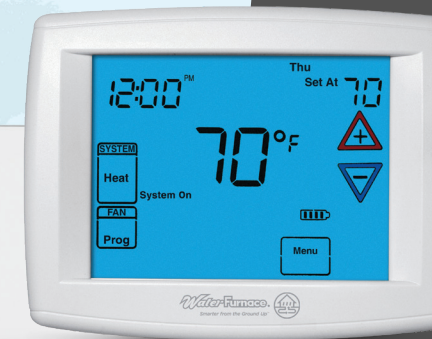
- a. Aurora WebLink
- b. Symphony Thermostat
- c. Invisible Thermostat Capability
- d. Water/Sump Alarm
- e. Advanced Zoning System



TPCC32U01 Deluxe Touch-Screen

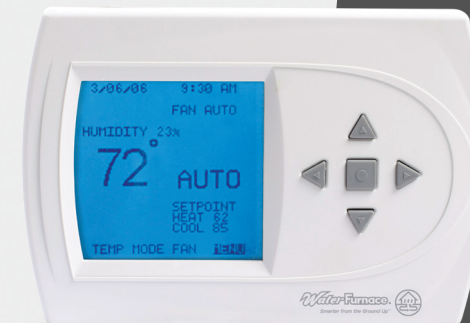
A beautiful communicating color touch-screen thermostat that provides intuitive comfort control. This programmable thermostat can also provide instantaneous and 13 month energy monitoring history.* The TPCC32U01 features 3 heat and 2 cool stages, dual fuel capabilities, Comfort Talk error communication, humidity control, outdoor sensors and more.

* Energy monitoring requires our AXB advanced controls.



TP32W03 Thermostat

This thermostat is made for use with single or dual stage units that feature an ECM blower motor. It features 3 heat stages and 2 cool stages and dual fuel capabilities. With a sleek touch screen display this programmable thermostat will look great in any home.



TP32U03/04 Elite Programmable

This powerful thermostat is great for any system. It allows dual fuel capability, winter humidity control, text based output and Comfort Talk error communication.



IntelliZone2®

The IntelliZone2 gives you the power to precisely control temperatures in up to 4 different areas with our dual capacity systems and up to 6 different areas with our variable capacity equipment. The result is the ultimate in comfort and cost savings. You've already chosen the finest heating and cooling system available; now choose the most advanced zoning system available to control it.



GeoTank™

The WaterFurnace GeoTank is simply the best way to capture free preheated water from your unit.*

*GeoTank is to be used in series with another hot water heater.



The WaterFurnace name has been synonymous with geothermal since we were founded in 1983. Over the years we've worked to innovate new technologies, integrate key trends and grow our core business to represent clean and sustainable solutions. Our units combine sound engineering with the highest levels of quality control to provide you with some of the most efficient heating and cooling systems on the planet. WaterFurnace—*Smarter from the Ground Up.*

ISO Accreditations:



visit us at waterfurnace.com

