

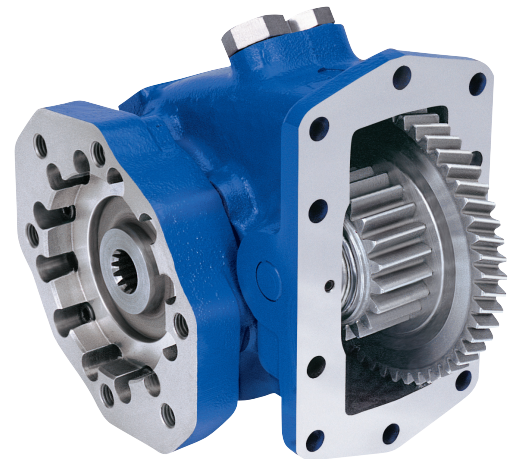
# CD10 SERIES

CONSTANT DRIVE POWER TAKE-OFF



## DESIGNED FOR HEAVY DUTY APPLICATIONS

Designed as a functional alternative to front, crank shaft driven hydraulic pump applications, the CD10 Series power take-off boasts an ample capacity for heavy duty applications without obstructing service areas of the truck engine and cooling system. Its seven speed ratios make it easy to select the correct PTO for your application.



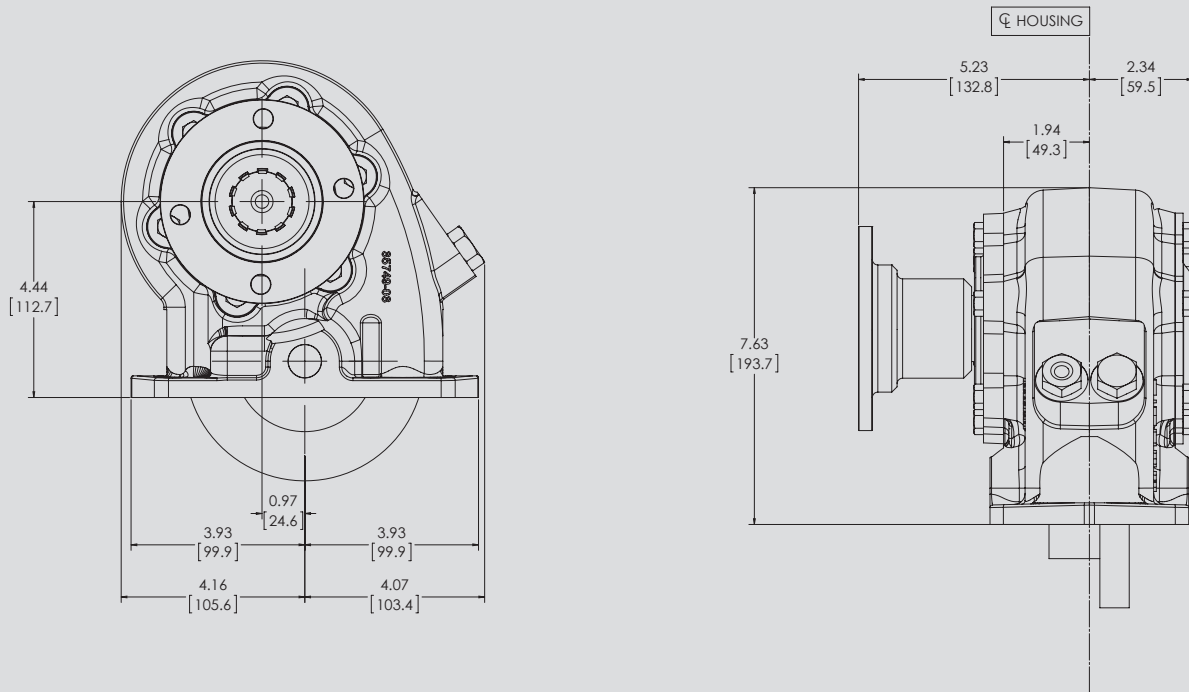
## KEY FEATURES

- Up to 400 lb. ft. torque capacity and 76 H.P. @1000 RPM: Power to drive high volume pumps
- Three standard output shafts in both keyed and flange types: Versatility for remote pump drives
- S.A.E. "A", "B", "BB", and "C"; DIN 5462 direct mount pump options: Fits most popular pumps
- Multi-position direct mount flanges: Allows pump to be positioned for maximum clearance
- Designed to work with Muncie's PTO Shaft Extensions on Allison 3000 and 4000 series transmissions: Clearance for large volume and variable displacement pumps
- Two assembly arrangements: Allows the PTO to be mounted shaft high or low on either side of the transmission
- Standard pressure lubrication: No extra cost

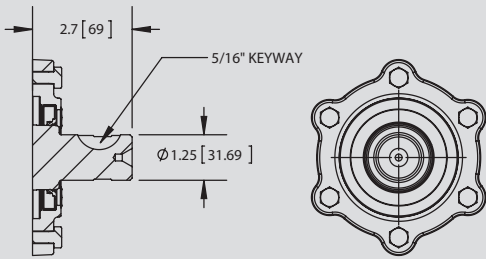
## PTO TORQUE & HORSEPOWER RATINGS

SPEED RATIO	INTERMITTENT HP@1000 RPM	INTERMITTENT TORQUE LBS.FT.	CONTINUOUS TORQUE LBS.FT.	INTERMITTENT [KW]@1000 RPM	INTERMITTENT TORQUE [NM]	CONTINUOUS TORQUE [NM]
05	76	400	280	[57]	[542]	[379]
06	73	385	270	[54]	[522]	[365]
07	68	360	252	[51]	[488]	[342]
08	64	336	235	[48]	[456]	[319]
10	59	310	217	[44]	[420]	[294]
12	50	260	182	[37]	[352]	[246]
15	43	225	158	[32]	[305]	[214]

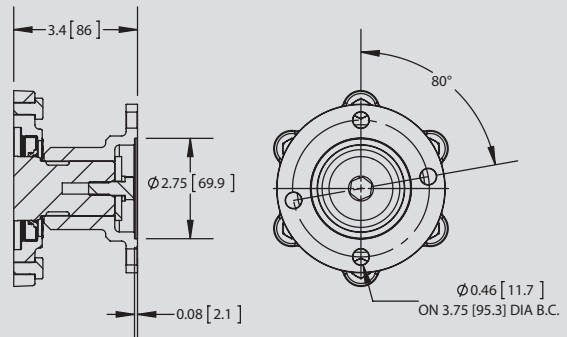
# DIMENSIONS



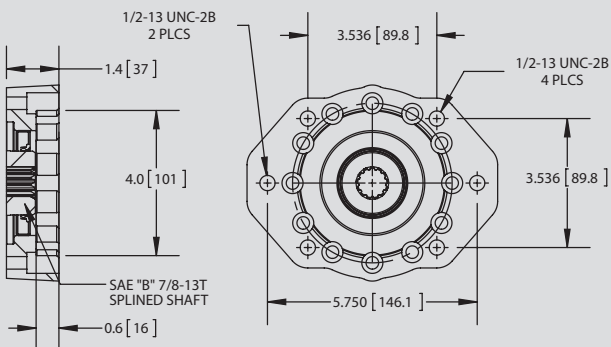
# OUTPUT OPTIONS



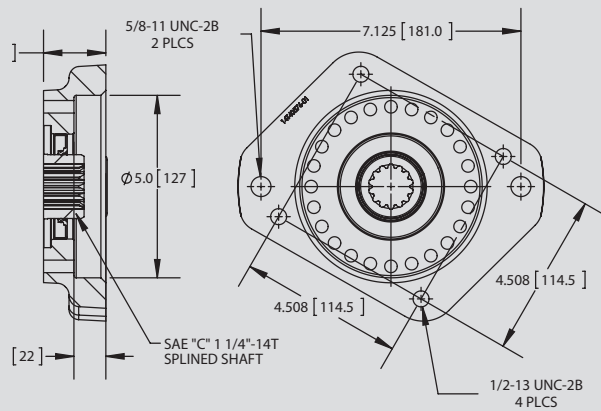
"B" OUTPUT - 1.25" RD SHAFT W/ 5/16" KEY



"C" OUTPUT - 1410 COMP FLANGE

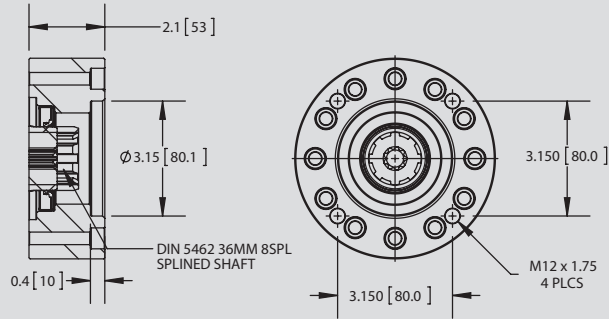


"D" OUTPUT - SAE "B" 2/4 BOLT

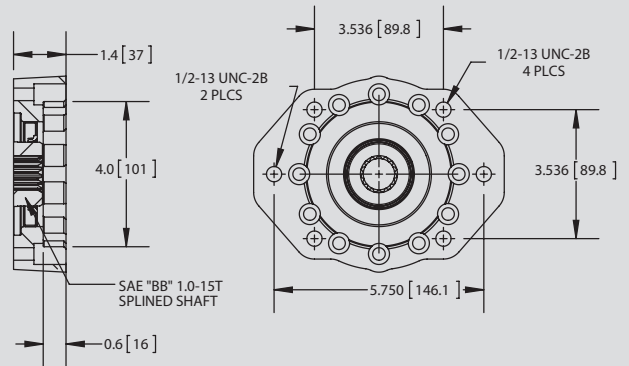


"E" OUTPUT - SAE "C" 2/4 BOLT

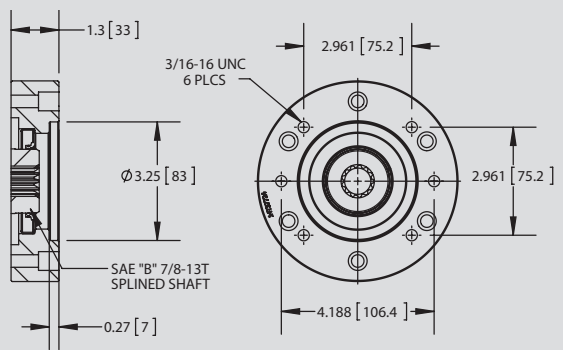
# OUTPUT OPTIONS



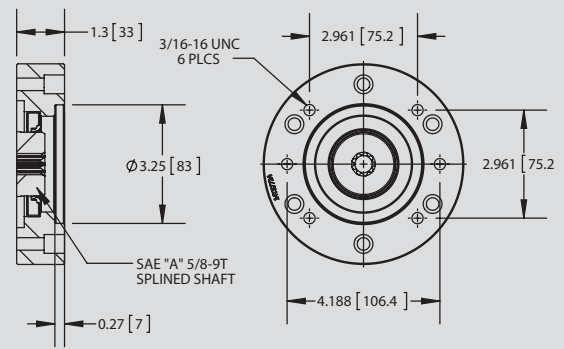
"I" OUTPUT - DIN 5462



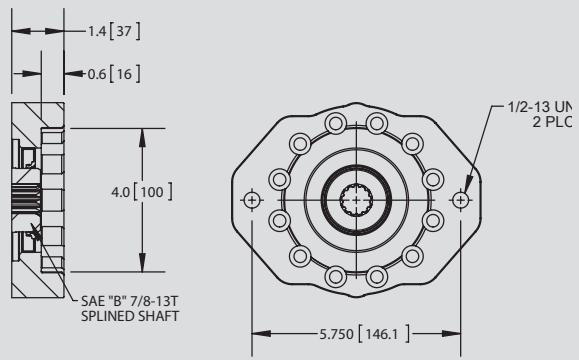
"P" OUTPUT - SAE "B" 2/4 BOLT FLANGE  
SAE "BB" 1"-15T SHAFT



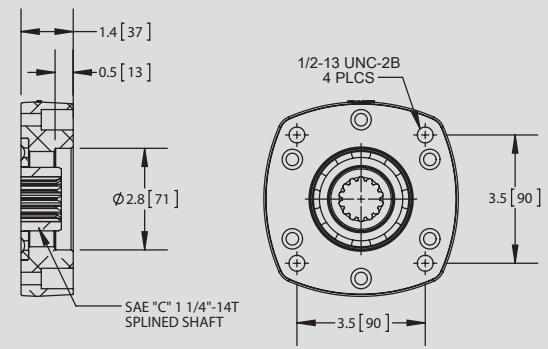
"Q" OUTPUT - SAE "A" 2/4 BOLT FLANGE  
SAE "B" 7/8"-13T SHAFT



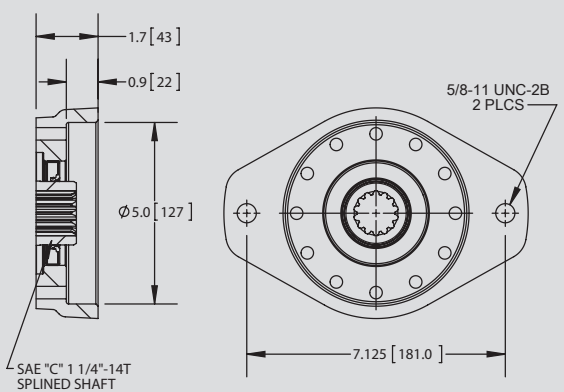
"R" OUTPUT - SAE "A" 2/4 BOLT



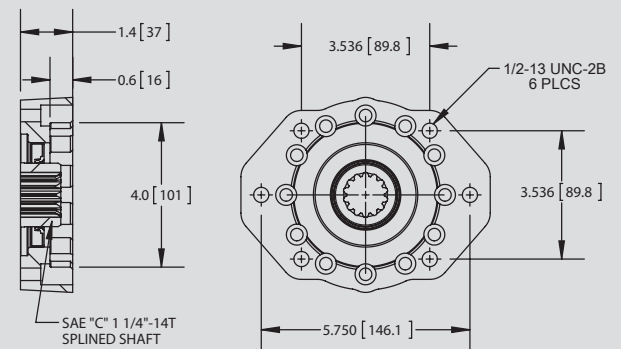
"S" OUTPUT - SAE "B" 2 BOLT



"V" OUTPUT - FOR MUNCIE EXTENDED SHAFT

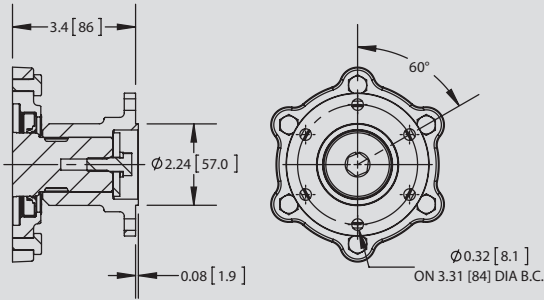


"Y" OUTPUT - SAE "C" 2 BOLT



"Z" OUTPUT - SAE "B" 2/4 BOLT FLANGE  
SAE "C" 1 1/4"-14T SHAFT

# OUTPUT OPTIONS



"2" OUTPUT - DIN120 COMP FLANGE

# MODEL NUMBER CONSTRUCTION

**CD-10-A10-08 M-1-C-X**

**PTO Type**

Constant Drive — CD

**Mounting**

10-Bolt Mount  
10, 40

**Transmission**

Allison

**CS Gear Data**

10.16P RH — A10

**Speed Ratio**

CD10  
05 — .55:1    08 — .84:1  
06 — .64:1    10 — .97:1  
07 — .74:1    12 — 1.19:1  
                  15 — 1.47:1

**Shifter Type**

Constant Mesh — M

**Special Features**

- X — None (Pressure Lube Std. on all Units)
- B — 48" Hose Kit
- G — Greaseable Output CD10
- U — Pulse Generator
- W — Wet Spline (I output only)
- 3 — 17" Lube Hose Kit
- 4 — Lube Hose Delete

**Output Types**

- B — 1-1/4" Round 5/16KW
- C — 1410 Companion Flange
- D — SAE "B" 2 & 4 Bolt
- E — SAE "C" 2 & 4 Bolt
- I — DIN 5462
- P — SAE "BB" 2 & 4 Bolt
- Q — SAE "A" 2 Bolt/SAE "B" 7/8-13T Shaft
- R — SAE "A" 2 Bolt
- S — SAE "B" 2 Bolt
- V — For Muncie Extended Shaft\*  
\*Does not include extended shaft
- Y — SAE "C" 2 Bolt
- Z — SAE "B" 2 & 4 Bolt SAE "C" Shaft
- 2 — DIN100 Companion Flange

**Assembly Arrangement**

1 or 3

