

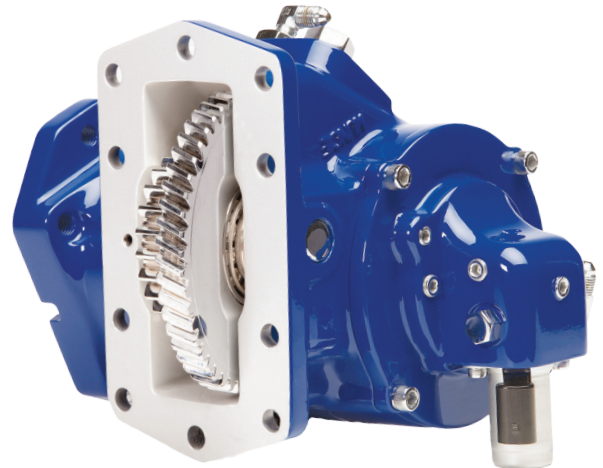
# CS24/25 SERIES

## CLUTCH SHIFT POWER TAKE-OFF



### HEAVY DUTY IN A SMALLER PACKAGE

Designed with the same technology as the CS10 Series, the CS24 Series power take-off is 20 percent smaller. CS PTOs are engaged by means of a direct mounted solenoid, which activates an internal wet clutch pack. Installation is simplified with a single hose connection.



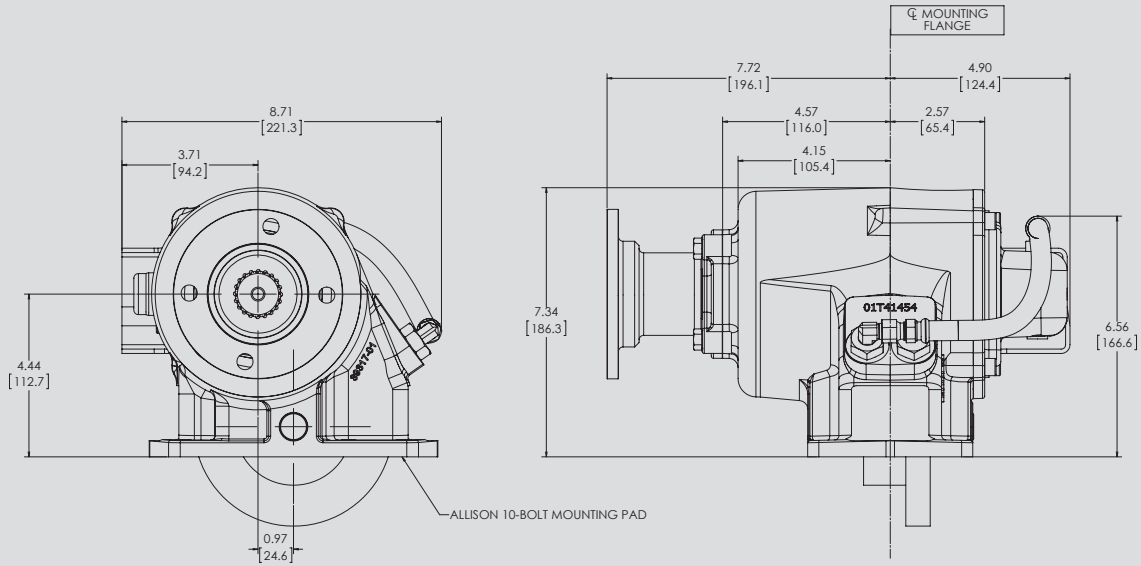
### KEY FEATURES

- Four remote mount output shafts in both keyed and flange types: Versatility for remote pump drives
- S.A.E. "A", "B", "BB", and DIN 5462 direct mount pump options: Fits most popular pumps
- Rotatable direct mount flanges: Allows pump to be positioned for maximum clearance
- Compatible with PTO Shaft Extensions for Allison transmissions: Moves the pump mount to the rear of the transmission for large pump clearance
- Muncie drag brake prevents shaft rotation in the "OFF" mode
- Standard pressure lubrication: No extra cost
- Two assembly arrangements: Allows the PTO to be mounted shaft high or low on either side of the transmission

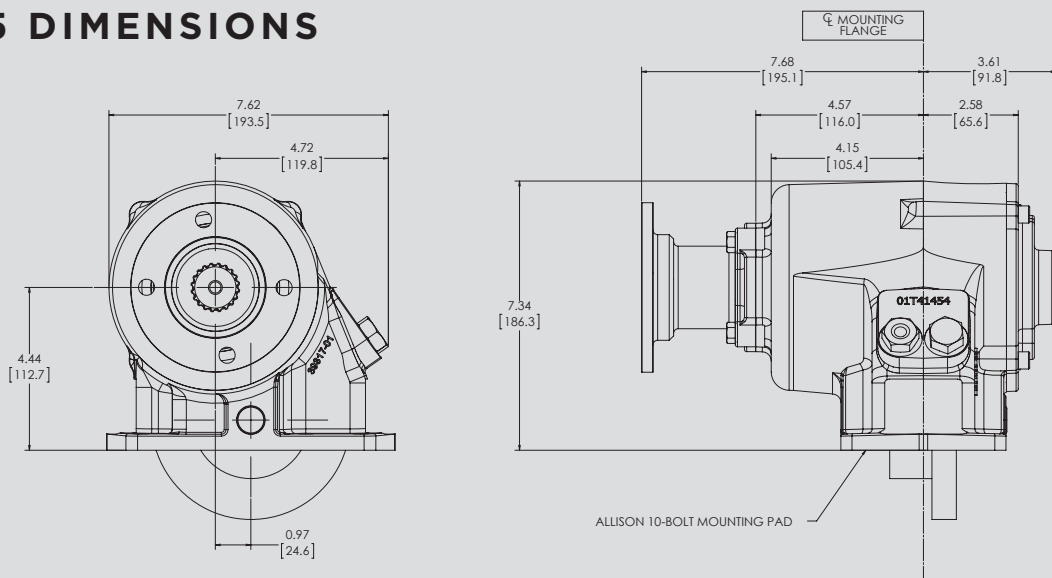
### PTO TORQUE & HORSEPOWER RATINGS

SPEED RATIO	INTERMITTENT HP@1000 RPM	INTERMITTENT TORQUE LBS.FT.	CONTINUOUS TORQUE LBS.FT.	INTERMITTENT [KW]@1000 RPM	INTERMITTENT TORQUE [NM]	CONTINUOUS TORQUE [NM]
05	62	325	228	[46]	[440]	[308]
06	62	325	228	[46]	[440]	[308]
07	58	305	214	[43]	[414]	[290]
08	56	295	207	[42]	[400]	[280]
10	55	290	203	[41]	[393]	[275]
11	48	250	175	[36]	[338]	[237]
12	48	250	175	[36]	[338]	[237]
15	38	200	140	[28]	[271]	[190]

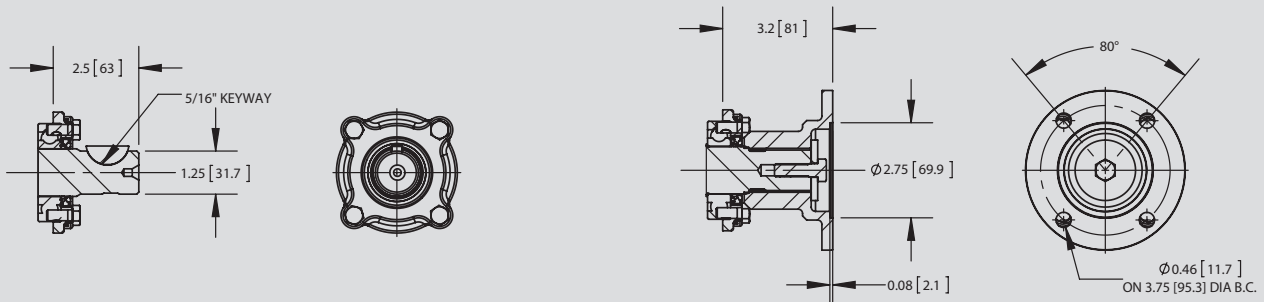
## CS24 DIMENSIONS



## CS25 DIMENSIONS



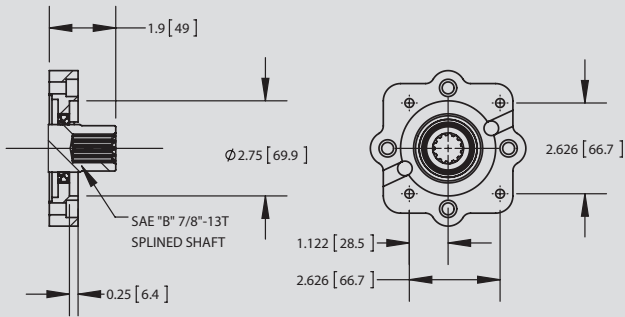
## OUTPUT OPTIONS



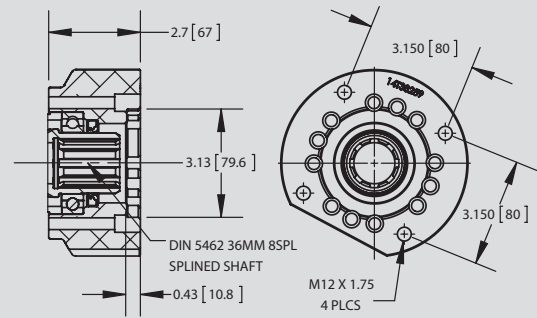
"B" OUTPUT - 1.25" RD SHAFT W/ 5/16" KEY

"C" OUTPUT - 1410 COMP FLANGE

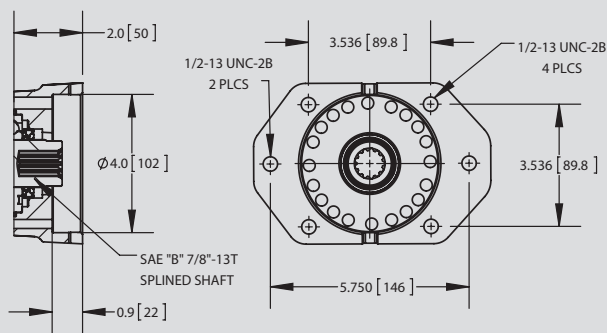
# OUTPUT OPTIONS (CONT)



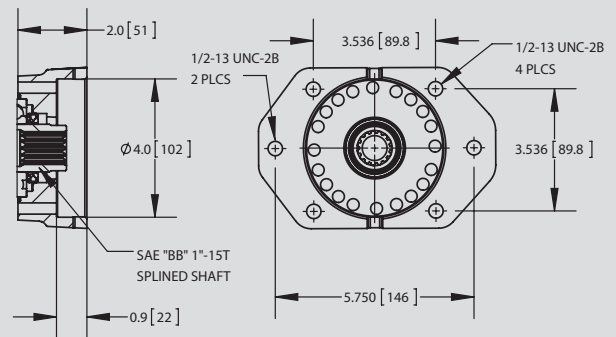
"G" OUTPUT - SPECIAL 4 BOLT DANA MOUNT FLANGE



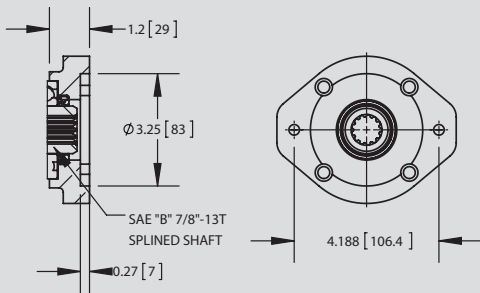
"I" OUTPUT - DIN 5462



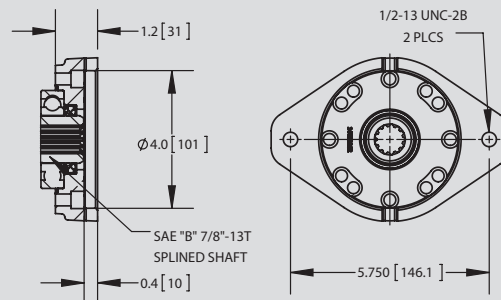
"K" OUTPUT - SAE "B" 2/4 BOLT



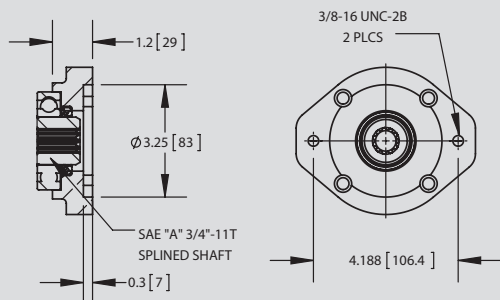
"P" OUTPUT - SAE "B" 2/4 BOLT FLANGE  
SAE "BB" 1'-15T SPLINED SHAFT



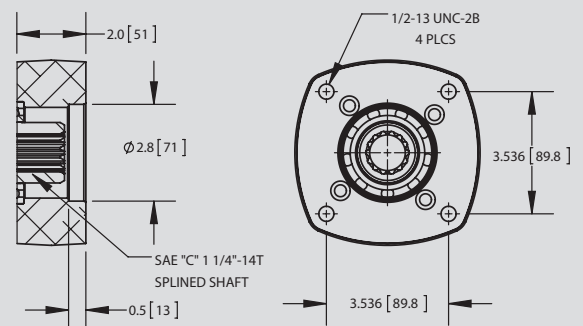
"Q" OUTPUT - SAE "A" 2 BOLT FLANGE  
SAE "B" 7/8'-13T SPLINED SHAFT



"S" OUTPUT - SAE "B" 2 BOLT

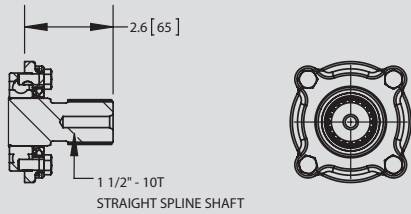


"T" OUTPUT - SAE "A" 2 BOLT FLANGE  
SAE "A" 3/4'-11T SPLINED SHAFT

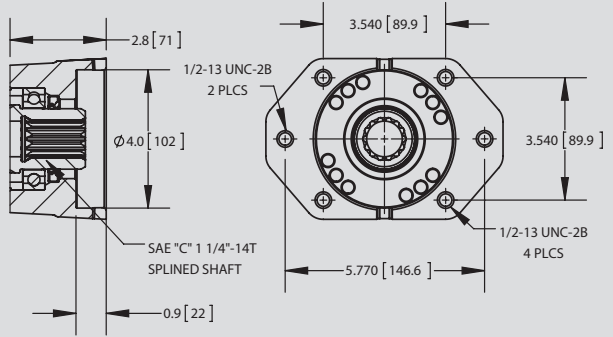


"V" OUTPUT - FOR MUNCIE EXTENDED SHAFT

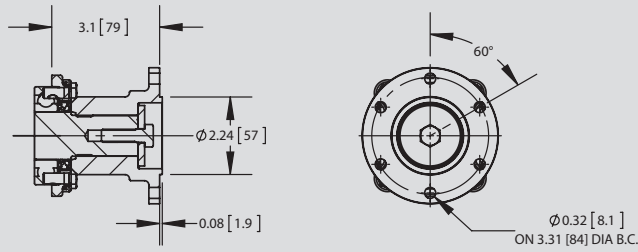
# OUTPUT OPTIONS (CONT)



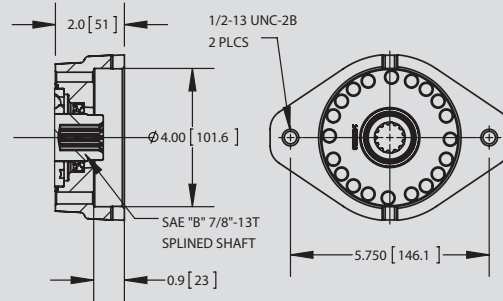
"X" OUTPUT - 1 1/2"-10T  
FOR COMP FLANGE



"Z" OUTPUT - SAE "B" 2/4 BOLT FLANGE  
SAE "C" 1 1/4"-14T SHAFT



"2" OUTPUT - DIN 100 COMP FLANGE



"6" OUTPUT - SAE "B" 2 BOLT SPECIAL

# MODEL NUMBER CONSTRUCTION

## CS-24-A10-08 H-1-C-X

### PTO Type

Clutch Shift — CS

### Mounting

10-Bolt Mount

24

25 (remote shift solenoid valve)

### Transmission

Allison

### Gear Data

10.16P RH — A10

### Speed Ratio

CS24

05 — .55:1

06 — .64:1

07 — .74:1

08 — .84:1

10 — .97:1

12 — 1.19:1

15 — 1.47:1

### Shifter Type

12V Elec/Hyd — H

24V Elec/Hyd — J

### Special Features

X — None (Pressure Lube Std. on all Units)

A — SP: SAE-B for Parker Sculpted Piston Pump (P-Shaft-Opt)

B — 48" Hose Kit

D — Pulse Generator & EOS-111

U — Pulse Generator

2 — 36" Lube Hose Kit

3 — 17" Lube Hose Kit

4 — Lube Hose Delete

### Output Types

B — 1-1/4" Round 5/16KW

C — 1410 Companion Flange

D — SAE "B" 2 & 4 Bolt

G — Special

I — DIN 5462

K — SAE "B" 2 & 4 Bolt

P — SAE "BB" 2 & 4 Bolt

Q — SAE "A" 2 Bolt

S — SAE "B" 2 Bolt

T — SAE "A" 2 Bolt 3/4" 11T

V — For Muncie Extended Shaft\*

\*Extended Shaft not included

Y — SAE "C" 2 Bolt

Z — SAE "B" 2 & 4 Bolt SAE "C" Shaft

2 — DIN100 Companion Flange

6 — SAE "B" 2 Bolt

### Assembly Arrangement

1 or 3

