

# CS6/8 SERIES

## CLUTCH SHIFT POWER TAKE-OFF



### DESIGNED FOR VERSATILITY

Designed to work on Allison 1000 and 2000 series automatics and many other current manual transmissions, the CS6/8 Series power take-offs offer direct mount pump options and a drag brake. Upgrading to a multi-disk clutch brake allows for absolute shaft stoppage.



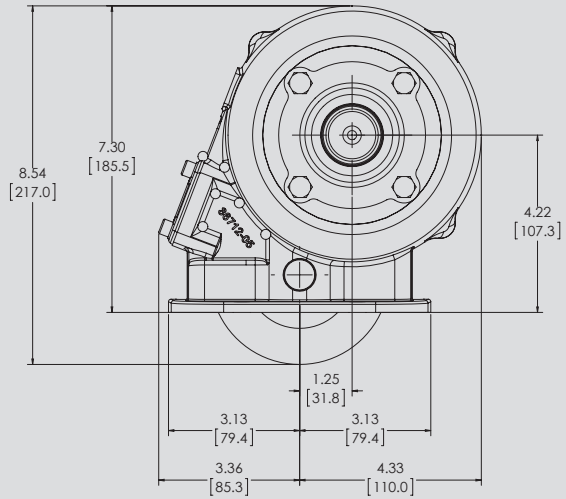
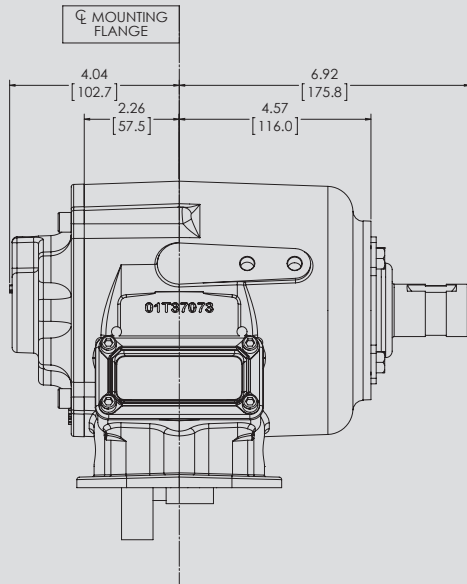
### KEY FEATURES

- 23 transmission input gears: Fits most popular automatic and manual transmissions
- Three remote mount output shafts in keyed and flange types: Versatility for remote pump drives
- S.A.E. "A", "B", and "BB"; DIN 5462 direct mount pump options: Fits most popular pumps
- Rotatable direct mount flanges: Allows pump to be positioned for maximum clearance
- Muncie drag brake prevents shaft rotation in the "OFF" mode
- Optional pulse generator: Lets System Protection Device monitor PTO shaft speed

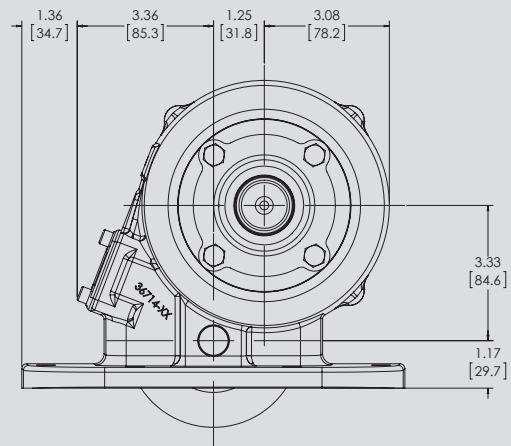
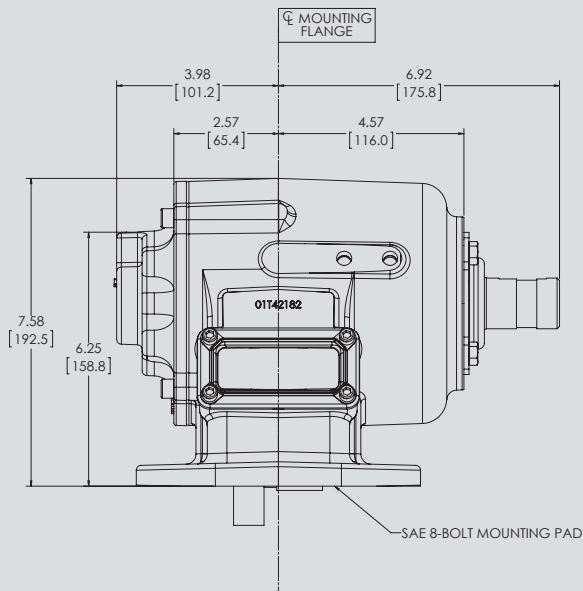
### PTO TORQUE & HORSEPOWER RATINGS

SPEED RATIO	INTERMITTENT HP@1000 RPM	INTERMITTENT TORQUE LBS.FT.	CONTINUOUS TORQUE LBS.FT.	INTERMITTENT [KW]@1000 RPM	INTERMITTENT TORQUE [NM]	CONTINUOUS TORQUE [NM]
03	57	300	210	[43]	[407]	[285]
04	57	300	210	[43]	[407]	[285]
05	57	300	210	[43]	[407]	[285]
06	57	300	210	[43]	[407]	[285]
07	57	300	210	[43]	[407]	[285]
09	52	275	193	[39]	[373]	[261]
12	52	275	193	[39]	[373]	[261]
14	52	275	193	[39]	[373]	[261]

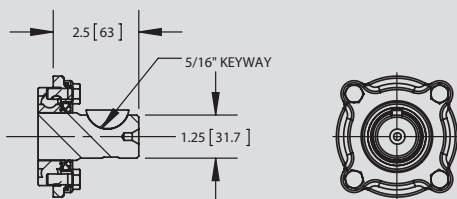
## CS6 DIMENSIONS



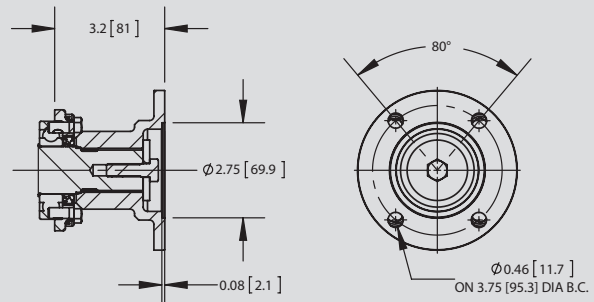
## CS8 DIMENSIONS



## OUTPUT OPTIONS

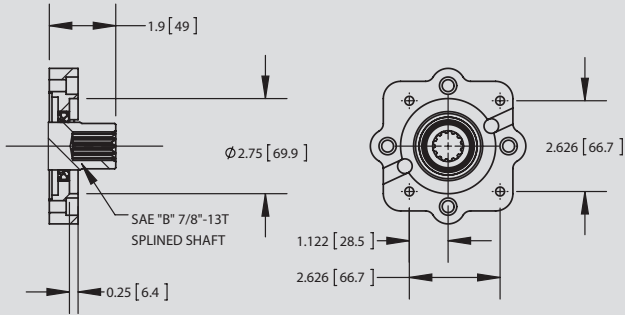


"B" OUTPUT - 1.25" RD SHAFT W/ 5/16" KEY

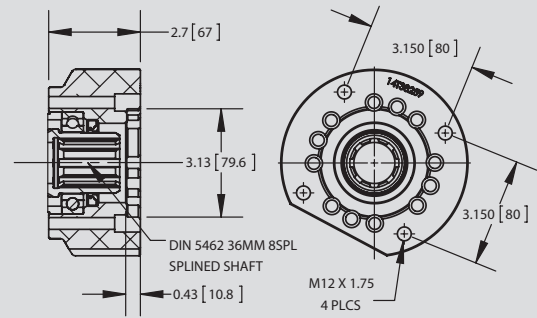


"C" OUTPUT - 1410 COMP FLANGE

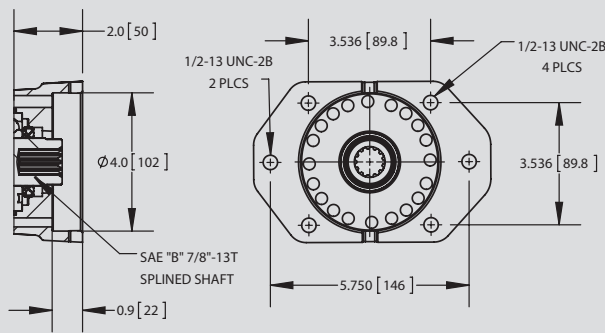
# OUTPUT OPTIONS (CONT)



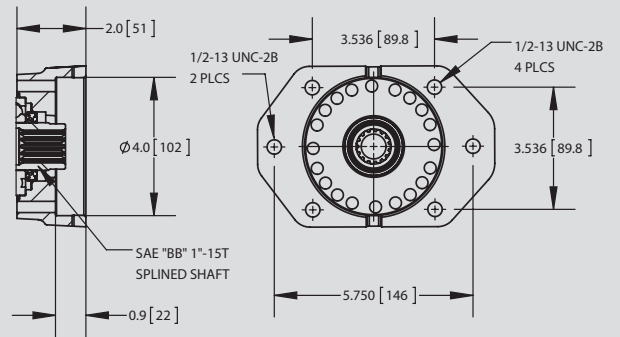
"G" OUTPUT - SPECIAL 4 BOLT DANA MOUNT FLANGE



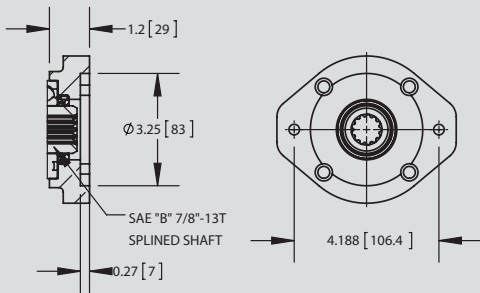
"I" OUTPUT - DIN 5462



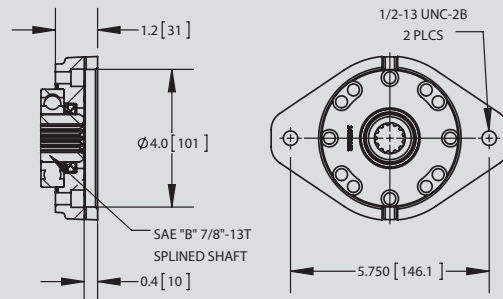
"K" OUTPUT - SAE "B" 2/4 BOLT



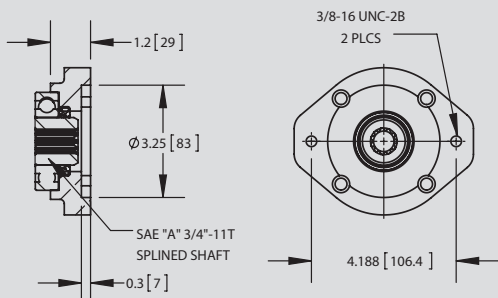
"P" OUTPUT - SAE "B" 2/4 BOLT FLANGE  
SAE "BB" 1"-15T SPLINED SHAFT



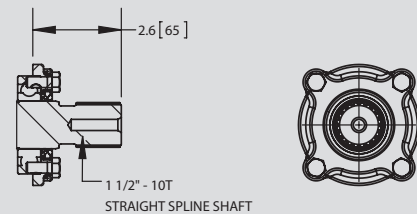
"Q" OUTPUT - SAE "A" 2 BOLT FLANGE  
SAE "B" 7/8"-13T SPLINED SHAFT



"S" OUTPUT - SAE "B" 2 BOLT

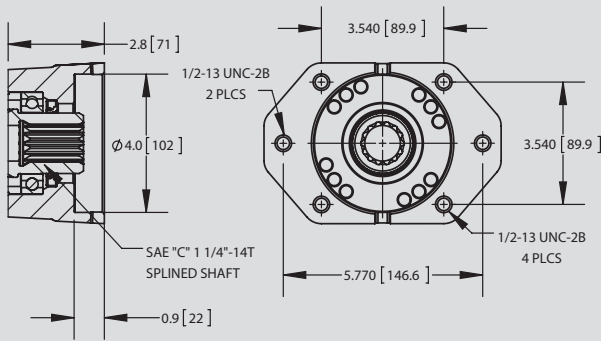


"T" OUTPUT - SAE "A" 2 BOLT FLANGE  
SAE "A" 3/4"-11T SPLINED SHAFT

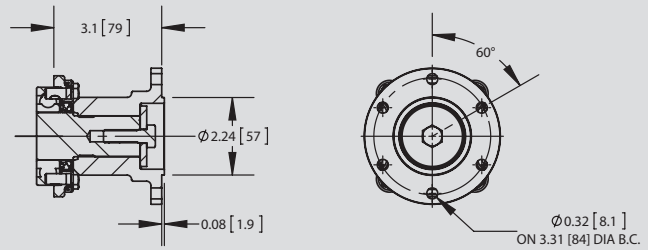


"X" OUTPUT - 1 1/2"-10T SHAFT  
FOR COMP FLANGE

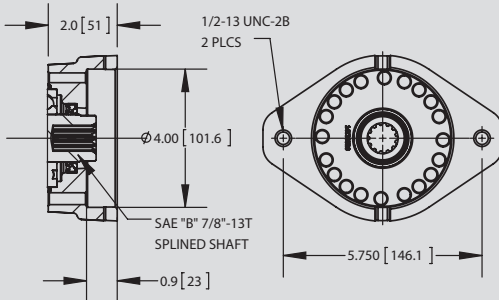
# OUTPUT OPTIONS (CONT)



"Z" OUTPUT - SAE "B" 2/4 BOLT FLANGE  
SAE "C" 1 1/4"-14T SHAFT



"2" OUTPUT - DIN 100 COMP FLANGE



"6" OUTPUT - SAE "B" 2 BOLT SPECIAL

# MODEL NUMBER CONSTRUCTION

## CS-6S-M65-07 E-1-B-X

### PTO Type

Clutch Shift (Standard Drag Brake) CS  
Clutch Shift (Optional Shaft Brake) CB

### Mounting

SAE 6-Bolt Std. Mtg. -6S  
SAE 6-Bolt Non-Std. Mtg. -6D  
SAE 6-Bolt Non-Std. Mtg. Deep -6N  
SAE 6-Bolt Std. Mtg. Metric -6M  
SAE 6-Bolt Non-Std. Mtg. Metric -6C  
SAE 8-Bolt Std. Mtg. -8S  
SAE 8-Bolt Std. Mtg. Metric -8M  
SAE 8-Bolt Non-Std. Mtg. -8D  
SAE 8-Bolt Non-Std. Mtg. Metric -8S

### Transmission (Input Gear Options)

Aisin -I84	Fuller -F84
Aisin -I85	Fuller -F85
Allison -A68	Fuller -F86
Allison -A69	Mack -M65
Clark/Fuller -C61	Mercedes -M83
Clark/Fuller -C70	Spicer -S73
Fuller -F10	Spicer -S71
Fuller -F11	Spicer -S60
Fuller -F61	Spicer -S70
Fuller -F63	Universal -S68
Fuller -F66	Universal -U60
Fuller -F70	Universal -U68

### Speed Ratio\*

03 - 0.33:1	07 - 0.70:1
04 - 0.44:1	09 - 0.87:1
05 - 0.47:1	12 - 1.15:1
06 - 0.56:1	14 - 1.44:1 (8-bolt only)

\*Not all combinations are available for input gear options. Refer to application catalog or service parts list for additional information.

### Special Features

X - None  
C - Pulse Generator / Press. Lube / SPD1001D  
D - Pulse Generator & SPD1001D  
P - Pressure Lube  
R - Pulse Generator / No Prew S - Pulse Generator / Pressure Lube

### Output Types

B - 1-1/4 Round 5/16 KW  
C - 1410 Companion Flange  
G - Special  
I - DIN 5462  
K - SAE "B" 2 & 4-bolt  
L - Low-Box Only  
P - SAE "B-B" 2 & 4-bolt  
Q - SAE "A" 2-bolt  
R - SAE "A" 2-bolt  
S - SAE "B" 2-bolt  
T - SAE "A" 2-bolt  
Z - SAE "B" 2 & 4-bolt C Shaft  
2 - DIN Companion Flange  
6 - SAE "B" 2-bolt

### Assembly Arrangement

1, 2, 3, or 4 (See Below)

### Shifter Type

A - Manual Air  
E - Electric/Air 12v  
F - Electric/Air 24v  
H - Electric/Hyd 12v  
J - Electric/Hyd 24v

