

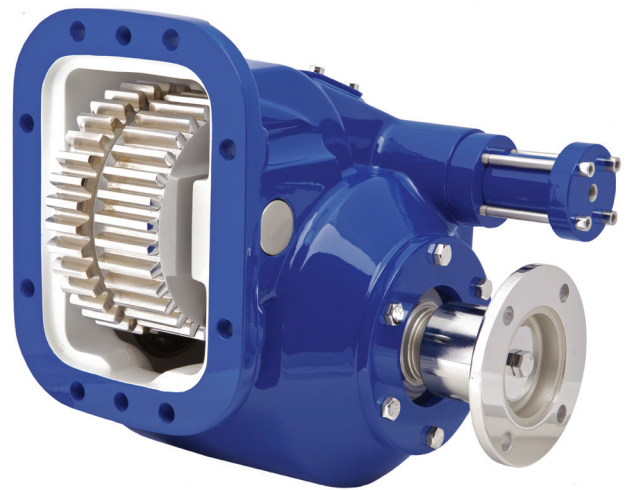
# 82 SERIES

POWER TAKE-OFF



## BUILT FOR HEAVY DUTY APPLICATIONS

Built for high torque and heavy duty requirements, the 82 Series power take-off features a lever or air shift cast iron housing and a single or dual optional hydraulic pump mount..



### KEY FEATURES

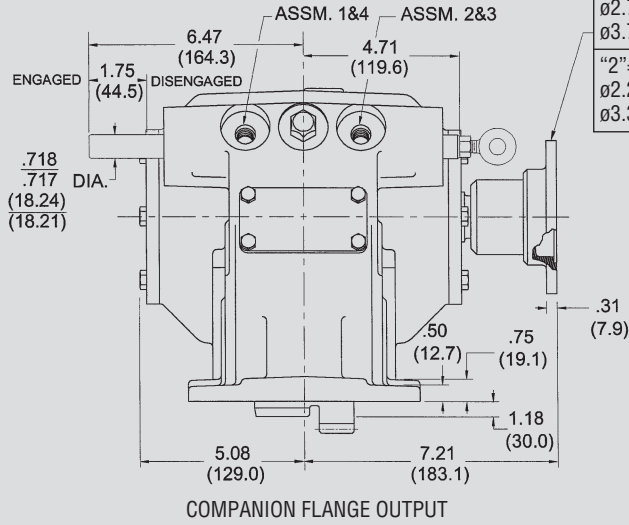
- Up to 500 lb.-ft. torque capacity and 95 H.P. @1000 RPM: Power to drive high volume pumps, high CFM blowers
- Double acting air shift: Positive engagement and disengagement
- Two companion flange output types: Versatility for remote pump and mechanical drives
- Seven direct mount pump options: S.A.E. "B", "BB", "C", "D"; and DIN 5462 mounts
- Rotatable direct mount flanges: Allows pump to be positioned for maximum clearance

### PTO TORQUE & HORSEPOWER RATINGS

SPEED RATIO	INTERMITTENT HP@1000 RPM	INTERMITTENT TORQUE LBS.FT.	CONTINUOUS TORQUE LBS.FT.	INTERMITTENT [KW]@1000 RPM	INTERMITTENT TORQUE [NM]	CONTINUOUS TORQUE [NM]
05	95	500	350	[71]	[678]	[475]
06	85	450	315	[63]	[610]	[427]
08	85	450	315	[63]	[610]	[427]
09	78	410	287	[58]	[556]	[389]
10	78	410	287	[58]	[556]	[389]
12	71	375	263	[53]	[508]	[356]
13	71	375	263	[53]	[508]	[356]
15	67	350	245	[50]	[475]	[332]
19	57	300	210	[43]	[407]	[285]

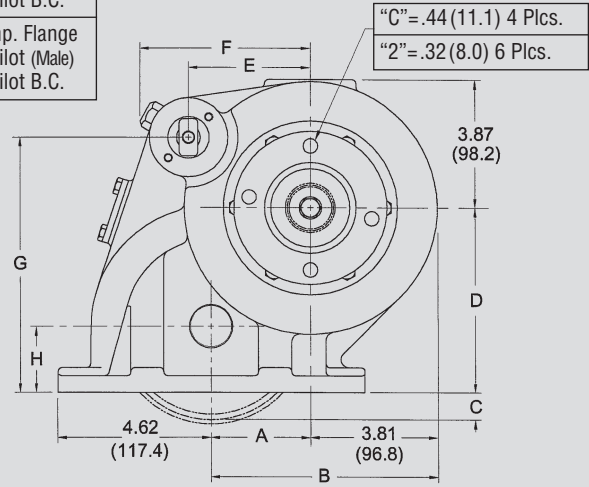
# DIMENSIONS

## POSITIVE SHIFT INDICATOR LIGHT SWITCH LOCATION

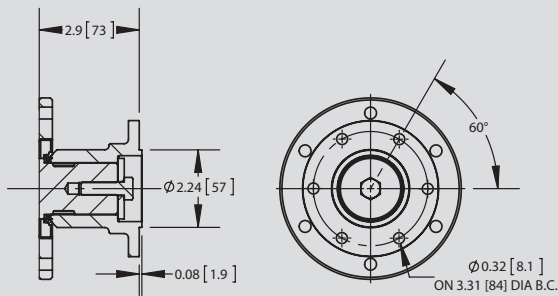


"C"=1410 Series  
 ø2.75(70.0)Pilot (Female)  
 ø3.75(95.1)Pilot B.C.

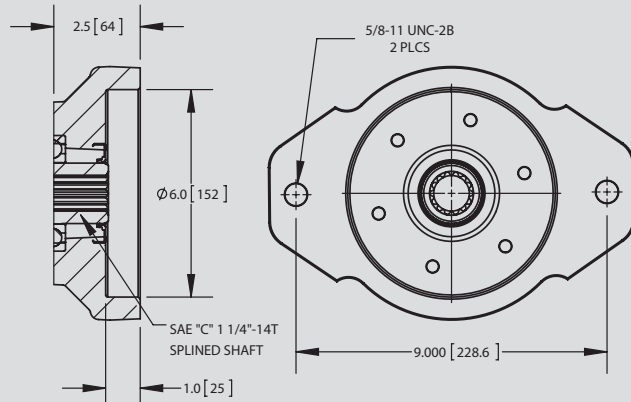
"2"=DIN Comp. Flange  
 ø2.24(57.0)Pilot (Male)  
 ø3.31(84.0)Pilot B.C.



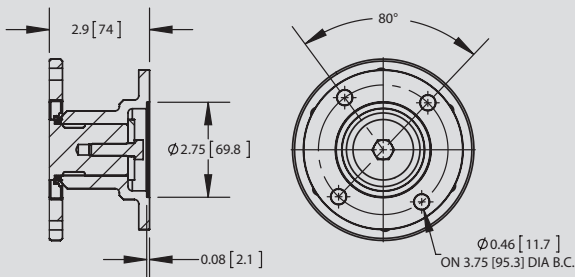
# OUTPUT OPTIONS



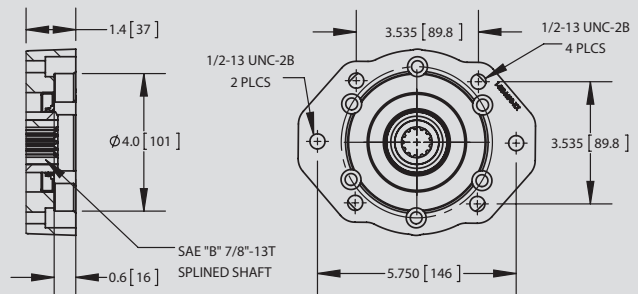
"2" OUTPUT - DIN100 COMPANION FLANGE



"A" OUTPUT - SAE "D" 2 BOLT FLANGE  
 SAE "C" 1 1/4"-14T SHAFT

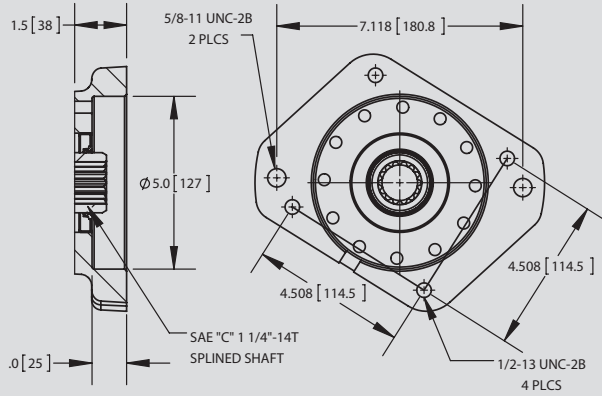


"C" OUTPUT - 1410 COMPANION FLANGE

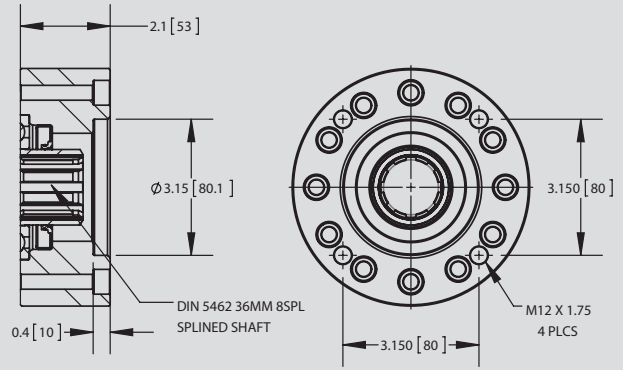


"D" OUTPUT - SAE "B" 2/4 BOLT

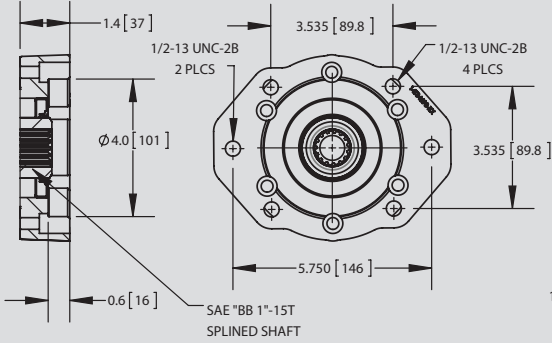
# OUTPUT OPTIONS (CONT)



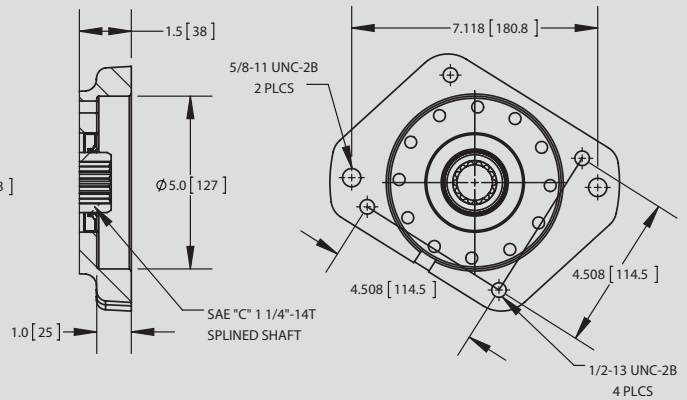
"E" OUTPUT - SAE "C" 2/4 BOLT



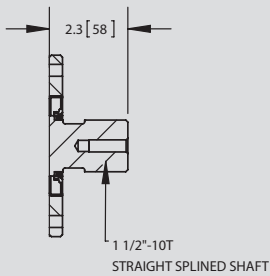
"I" OUTPUT - DIN 5462



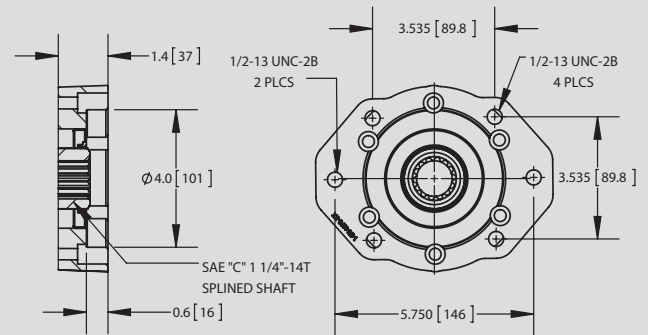
"P" OUTPUT - SAE "B" 2/4 BOLT FLANGE  
SAE "BB" 1"-15T SHAFT



"X" OUTPUT - SAE "C" 2/4 BOLT FLANGE  
DUAL OUTPUT



"X" OUTPUT - 1 1/2"-10T SHAFT  
FOR COMP FLANGE



"Z" OUTPUT - SAE "B" 2/4 BOLT FLANGE  
SAE "C" 1 1/4"-14T SHAFT

# MODEL NUMBER CONSTRUCTION

## 82-8S-U68-05 L-1-C-X

### PTO Type

8 Bolt 82 Series — 82

### Mounting

SAE 8 Bolt Std. Mtg. — 8S  
 SAE 8 Bolt Std. Mtg. — Metric Studs — 8B  
 SAE 8 Bolt Std. Mtg. — Less Stud Kit — 8L  
 SAE 8 Bolt Std. Mtg. — Special Roller Bearing — 8R

### Transmission

#### 82 Gear Data

Fuller	10.1P 21.5° PA Spur	-F11
Fuller	6 or 6/8P 20° Spur	-F68
Mack	6.48P 17° 30' Spur	-M65
Spicer	7P 17.5° 28° 4' 23" LH	-S70
Universal	5 or 5/7P 20° Spur	-U57
Universal	6P 25° Spur	-U62
Universal	6 or 6/8P 20° Spur	-U68

### Speed Ratio

05 — .47:1	
08 — .75:1	
09 — .93:1	13 — 1.33:1
10 — 1.00:1	15 — 1.50:1
12 — 1.15:1	19 — 1.89:1 (Cannot be sold in kit form)

### Special Features

X — None  
 G — Greaseable Output Shaft  
 P — Pressure Lubrication

### Output Types

A — SAE "C" Shaft / SAE "D" Flange  
 C — 1410 Companion Flange  
 D — SAE "B"  
 E — SAE "C"  
 I — DIN 5462  
 P — SAE "BB" (Same as DW/1" -15spl)  
 U — SAE "C" (Double output flanges)  
 Z — SAE "C" Shaft / SAE "B" Flange  
 2 — DIN Companion Flange

### Assembly Arrangement

1 2 3 4

### Shifter Type

D — Double Acting Manual Air (Dual Cyl.)  
 G — Double Acting Electric/Air (Sing. Cyl.)  
 L — Lever  
 M — Constant Mesh  
 P — Air Shiftless Activation (Dual Cyl.)  
 Q — Double Acting Manual Air (Sing. Cyl.)  
 U — Air Shiftless Activation (Sing Cyl.)  
 V — Double Acting Electric/Air (Dual Cyl.)

