

FA6B SERIES

POWER TAKE-OFF



DESIGNED TO FIT

With its angular housing design, the FA6B Series power take-off moves the clutch shifted output below chassis obstructions for either drive shaft applications or direct mount pumps for Allison and Aisin 6-bolt transmissions. Direct pump mounts for SAE “A” flanges with 7/8”-13T or 3/4”-11 shafts are available.



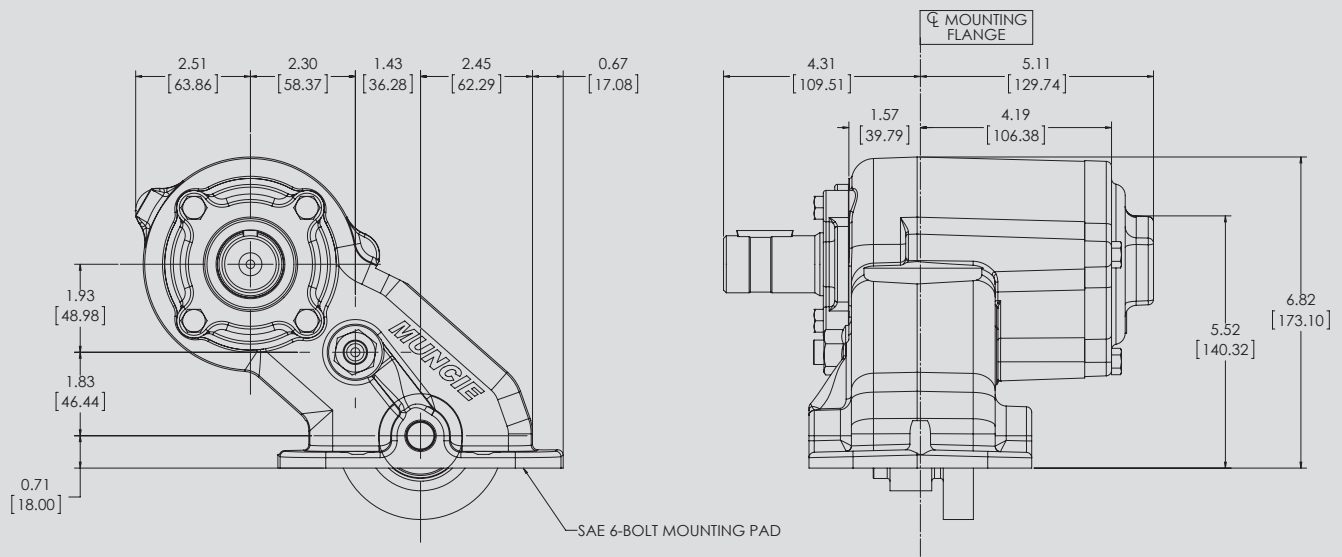
KEY FEATURES

- Solenoid activated clutch shift: Positive, no “gear clash” engagement
- Advanced Gear Design: Reduced Noise, Robust Design
- Pre-configured wiring harness: Easy, plug-in installation
- Remote and direct mount models: Versatile pump mounting
- One year warranty: Industry Leading Support and Availability

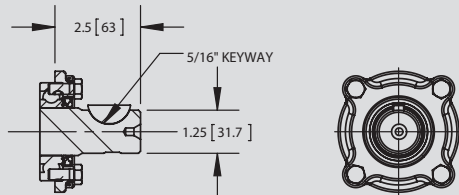
PTO TORQUE & HORSEPOWER RATINGS

PTO SERIES	SPEED RATIO	INTERMITTENT HP@1000 RPM	INTERMITTENT TORQUE LBS.FT.	CONTINUOUS TORQUE LBS.FT.	INTERMITTENT [KW]@1000 RPM	INTERMITTENT TORQUE [NM]	MAX SPEED
FA6B-A67	06	25	131	252	19	177	2500
FA6B-I84	06	15	86	235	11	116	2500
FA6B-I84/ AS69RC TRANSMISSION	06	24	124	217	16	172	2500

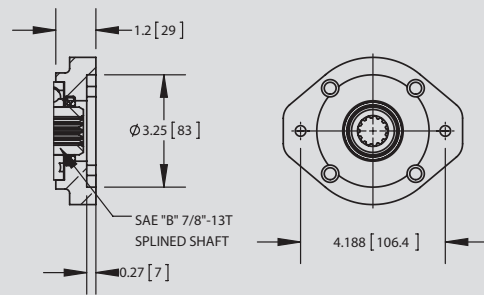
DIMENSIONS



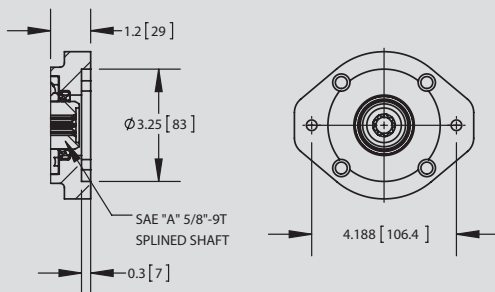
OUTPUT OPTIONS



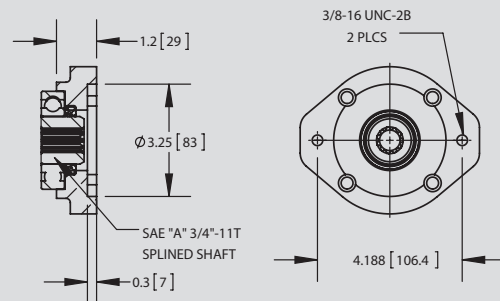
"B" OUTPUT - 1.25" RD SHAFT W/ 5/16" KEY



"Q" OUTPUT - SAE "A" 2 BOLT FLANGE
SAE "B" 7/8"-13T SPLINED SHAFT



"R" OUTPUT - SAE "A" 2 BOLT FLANGE
SAE "A" 5/8"-9T SPLINED SHAFT



"T" OUTPUT - SAE "A" 2 BOLT FLANGE
SAE "A" 3/4"-11T SPLINED SHAFT

MODEL NUMBER CONSTRUCTION

FA-6B-F14-06 H-3-T-X

PTO Type

Clutch Shift, Ford Type — FA

Mounting

SAE 6 Bolt Standard, Metric Kit — 6B

Transmission FA Gear Data

Aisin	8.46P 20°PA Spur	184
Allison	6.86P 20°PA Spur	A67

Speed Ratio

06 — .62:1

Special Features

X — None

Output Types

B — 1-1/4 Rd. 5/16 KW (FA62 & FA6B)

Q — 7/8 13 Spl.- 2 Bolt "A"

R — SAE "A" 2 & 4 Bolt

T — 3/4 11 Spl.- 2 Bolt "A"

Assembly Arrangement

3

Shifter Type

H — Electric/Hydraulic (12V)



Muncie Power Products, Inc., Member of Interpump Group
201 East Jackson Street, Muncie, Indiana, USA 47305
1-800-367-7867

Specifications are subject to change without notice. All rights reserved.
Please check www.munciepower.com for warranties and current versions of literature.
MP15-30 (Rev. 02-15)