

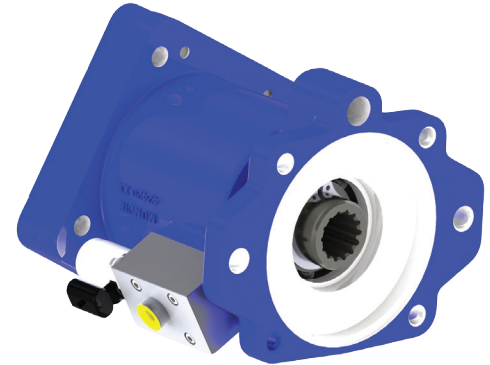
# RM1 SERIES

REAR MOUNT MECHANICAL  
SHIFT POWER TAKE-OFF



## DESIGNED FOR THE ALLISON TC-10 TRACTOR SERIES TRANSMISSION

Rear mount PTO with special design for the Allison TC-10 TS transmission with high torque capabilities in a small package. Designed for end dump trailers, live floors, compressors, conveyors, bulk transport dry or liquid, and other blower applications.



### KEY FEATURES

- Compact Design
- Integral 12 VDC Electric/Hydraulic Mechanically Shifted
- High Output Rating
- Output Options Include SAE-B, SAE-C, or 1410 Companion Flange, 1-1/4" Keyed (GB only)
- Face Clutch Shift
- Output Speed 128% of Engine
- Crankshaft Rotation, GB Output Opposite Rotation
- Wet Spline Pump Output Connection

### PTO TORQUE & HORSEPOWER RATINGS

ENG %	SPEED RATIO	INTERMITTENT TORQUE LB.FT.(NM)	CONTINUOUS TORQUE LB.FT. (NM)	INTERMITTENT POWER HP (KW)	ROTATION
128	10	675 [915]	675 [915]	128 [95]	CRNK
64	GB Output	200 [271]	200 [271]	38 [51]	OPPOSITE

### MODEL NUMBER CONSTRUCTION

**RM1-UC1 10-HX 1 X4 PX**

#### Series

Rear Mechanical — RM1

#### Mount

Universal SAE-C — UC1

#### Ratio

1:1 = 10

#### Features

PX — Pressure Lube

#### Output Types

X4 — 1410 Companion Flange

BB — SAE-B Shaft - SAE-B Flange

CC — SAE-C Shaft - SAE-C Flange

GB — Reduction Gearbox Included- 1-1/4" Rd.

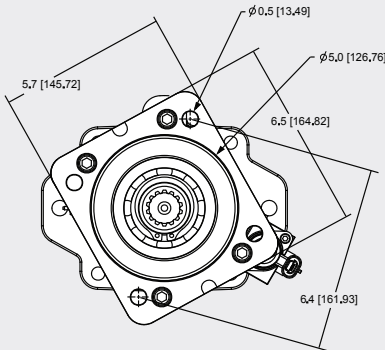
#### Assembly

1 — Arrangement

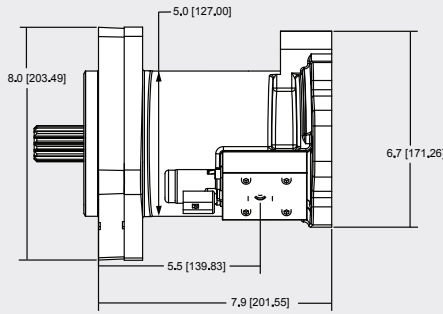
#### Shift Option

HX — 12v Elec/Hyd

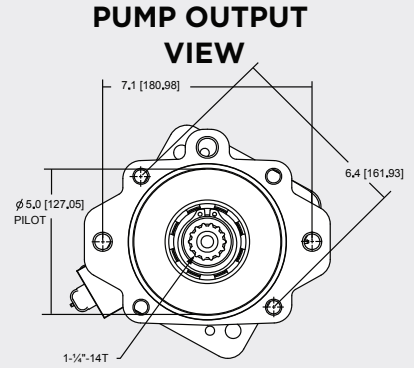
# DIMENSIONS RM1 SERIES



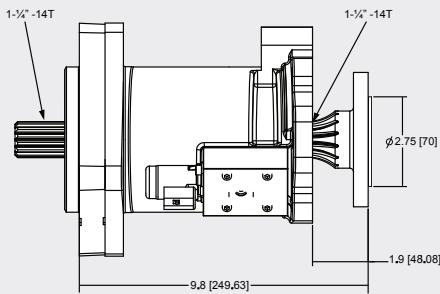
**TRANSMISSION  
MOUNT**



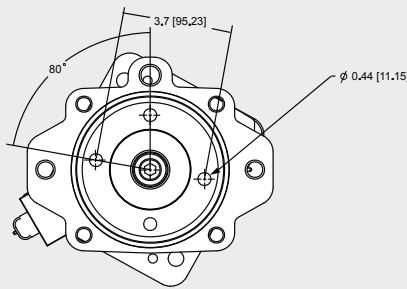
**SIDE VIEW**



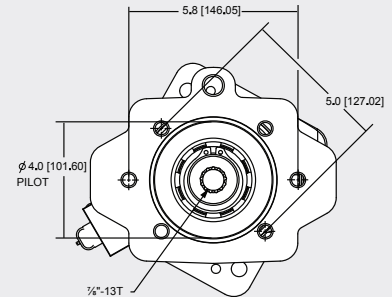
**SAE-C**



**SIDE VIEW  
DRIVELINE**

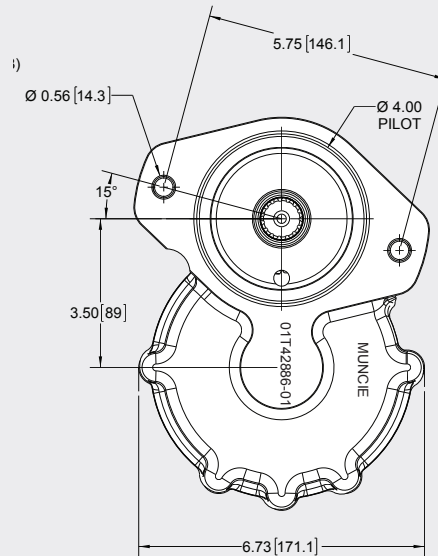
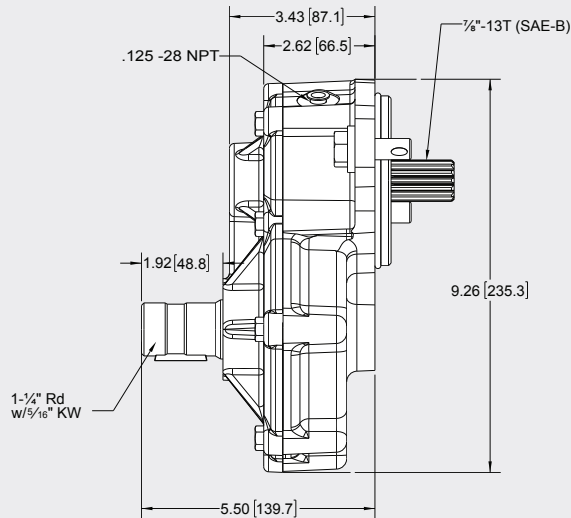


**1410 COMP FLG.**



**SAE-B  
(USE WITH GB1B)**

## GB1B-205-125A



**OPTIONAL OUTPUT SPEED REDUCTION GEARBOX GB1B-205-125A - OUTPUT SPEED RATIO 50% OF INPUT - OUTPUT TORQUE RATING 200 LB.FT. [271 NM]**