

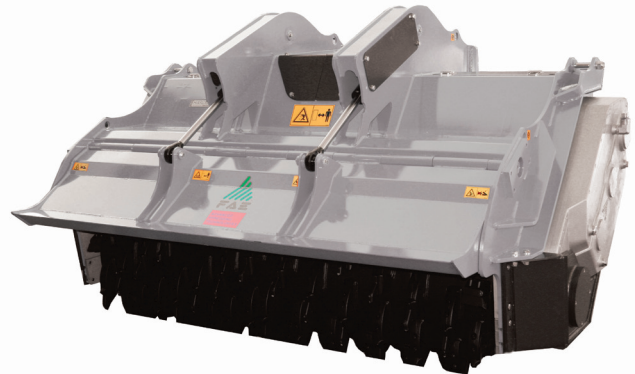
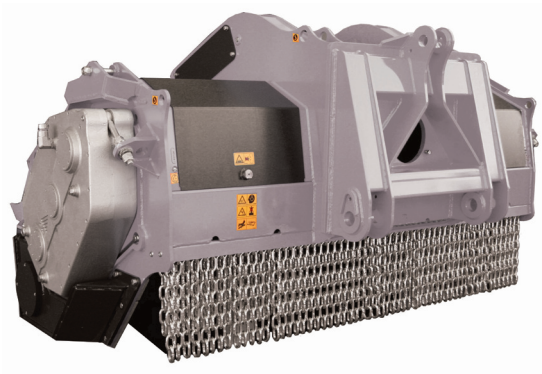


## 500S

Forestry tiller for special built hydraulic Prime Movers with power range between 450 and 650 HP.

**Standard equipment:** dual gear type transmission, hydraulic rear hood, hydraulic motors with variable torque.

**Options:** customized attachment plate, possibility to have the rotor equipped with teeth type "G/3".



## 500S

Model	Power HP	Requirements	Working width inches	Overall width inches	Weight lbs	Working depth inches (max)	Grinding diameter inches (max)	Teeth q.ty type	
	Min - Max	Flow gal/min Min - Max							Pressure PSI Min - Max
500/S - 225	450 - 650	150 - 205	5000	91	116	12670	20	24	104+4+4
500/S - 250	450 - 650	150 - 205	5000	101	126	13120	20	24	128+4+4
500/S - 275	450 - 650	150 - 205	5000	110	135	13670	20	24	152+4+4

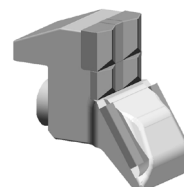
Data refers to the machine without options. Technical data for models with mechanical transmission upon request.



Tooth type B/3



Tooth type G/3 (option)



Tooth type STC/3/FP



Tooth type STC/FP