

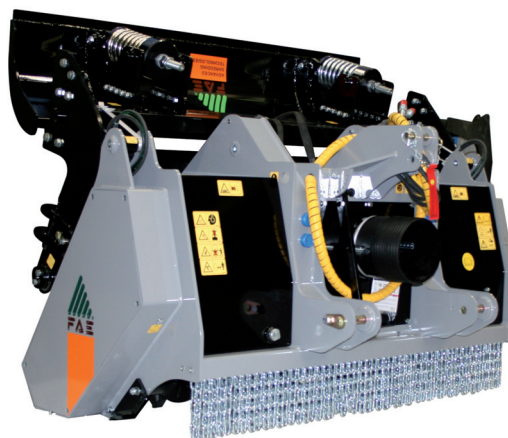
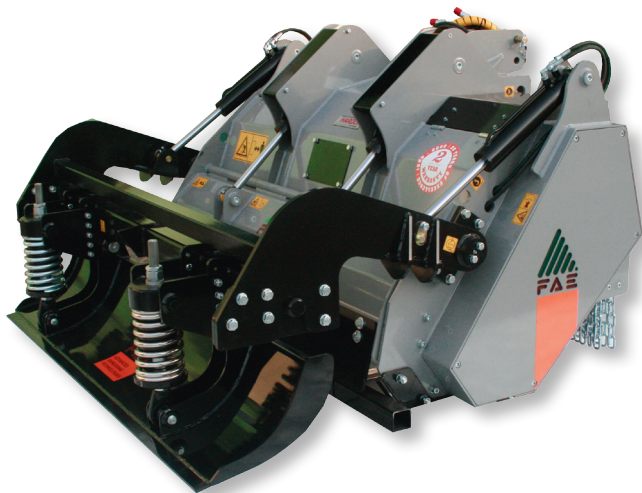


SFL

Forestry mulcher and stone crusher with mulching diameter and max working depth of 6 inches for tractors between 120 and 160 HP.

Standard equipment: PTO driveshaft with cam clutch, gearbox with free wheel, penetration skids, hydraulic rear hood, adjustable counter knives, mechanic push frame, dozing blade.

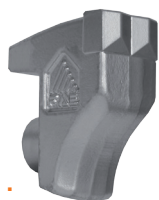
Options: hydraulic top link, dosing blade, hydraulic pushing frame, road kit or hydraulic support roller.



SFL

Model	Tractor HP min max	PTO rpm	Working width inches	Overall width inches	Weight lbs	Grinding diameter inches (max)	Working depth inches	Teeth q.ty/type STCL + CSS
SFL 150	120 - 160	540 - 1000	63	75	3200	6	6	30 + 2
SFL 175	120 - 160	540 - 1000	72	85	3530	6	6	34 + 2
SFL 200	120 - 160	540 - 1000	81	94	3860	6	6	40 + 2

Data refers to the machine without options. *540 rpm for stone crushing – 1000 rpm for mulching



Tooth type STCL



Tooth type C/SS (side scraper)