



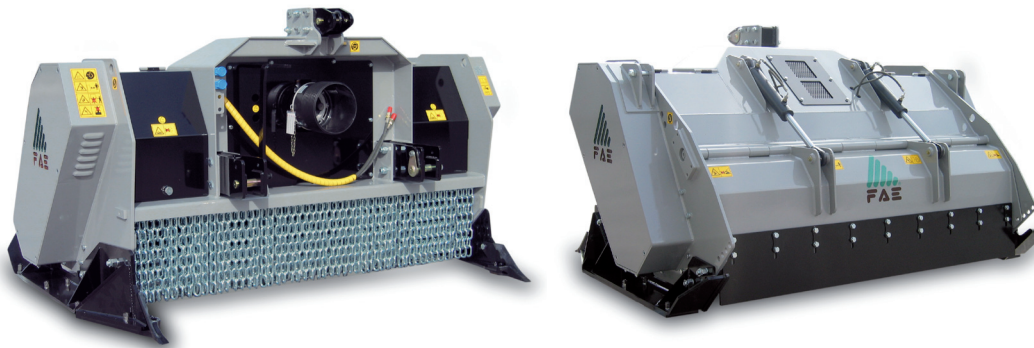
STCH STCH/SD

Stone crushers with a max working depth of 10 inches for tractors between 180 and 300 HP.

Standard equipment: dual transmission, PTO driveshaft with cam clutch, gearbox with freewheel, adjustable skids with interchangeable ploughshares and skid shoes, hydraulic rear hood, adjustable counter knives. In addition, for the **STCH/SD** model: inner plates in Hardox steel, adjustable three point linkage, teeth type STC/3/HD.

Options: dozing blade, road kit, hydraulic top link

Notes: For the correct usage, a creeper gear transmission is recommended.



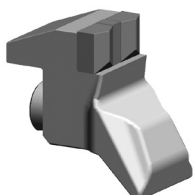
STCH

Model	Tractor HP		PTO rpm	Working width inches	Overall width inches	Weight lbs	Grinding diameter inches (max)	Working depth inches (max)	Teeth q.ty/type STC/3+STC/3/HD
	Min	Max							
STCH 200	180	280	1000	82	100	9481	20	10	52+4
STCH 225	200	280	1000	91	110	10010	20	10	58+4
STCH 250	220	280	1000	101	119	10540	20	10	66+4

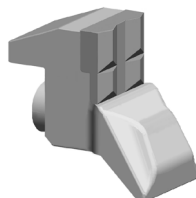
STCH/SD

Model	Tractor HP		PTO rpm	Working width inches	Overall width inches	Weight lbs	Grinding diameter inches (max)	Working depth inches (max)	Teeth q.ty/type STC/3/HD
	Min	Max							
STCH-SD 225	200	300	1000	91	110	10518	20	10	62
STCH-SD 250	220	300	1000	101	119	11290	20	10	70

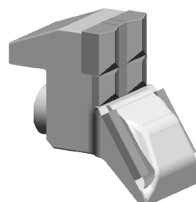
Data refers to the machine without options.



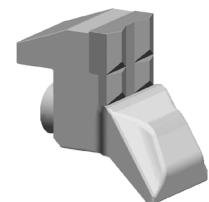
Tooth type STC/3



Tooth type STC/3/HD (option)



Tooth type STC/3/FP (option)



Tooth type STC/3/HD (side scraper)