



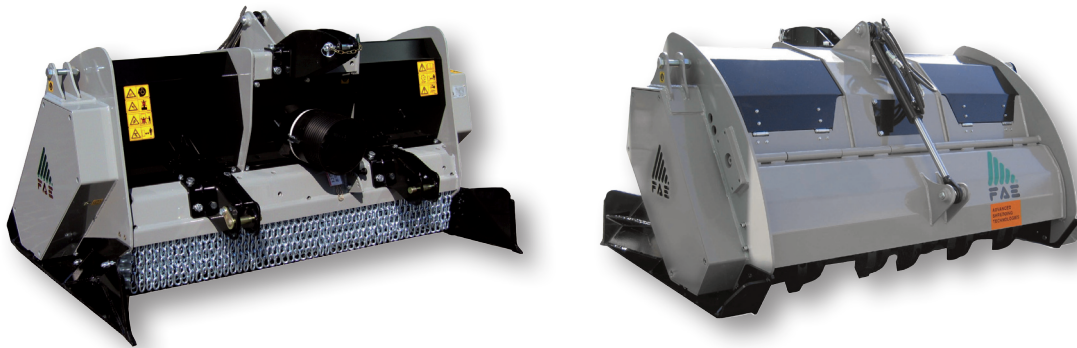
## STCL

Rock crushers with a max working depth of 6 inches for tractors between 80 and 150 HP

**Standard equipment:** single or dual transmission (depending on the model), PTO driveshaft with cam clutch, gearbox with freewheel, penetration skids, hydraulic rear hood, adjustable counter knives, adjustable three point linkage. Possibility to choose between 540 or 1000 rpm gearbox (only for models with single driven transmission).

**Options:** dozing blade, road kit, hydraulic top link.

**Notes:** For the correct usage, a creeper gear transmission is recommended.



## STCL

Model	Tractor HP Min – Max	PTO rpm	Working Width inches	Overall Width inches	Weight lbs	Grinding diameter inches(max)	Working Depth inches (max)	Teeth q.ty type STCL+C/SS
STCL 125	80 - 120*	540 - 1000	53	65	2822	6	6	24+4
STCL 150	90 - 120*	540 - 1000	63	75	3164	6	6	30+4
STCL 175	100 - 120*	540 - 1000	72	84	3462	6	6	34+4
STCL/DT 175	100 - 150	1000	72	84	3528	6	6	34+4
STCL/DT 200	120 - 150	1000	81	94	3848	6	6	40+4

Data refers to the machine without options.

\* For 540 RPM tractors max power 100 HP.



Tooth type STCL



Tooth type C/SS (side scraper)