

HUSTLER® COMMERCIAL ZERO-TURN MOWER

SUPER 88

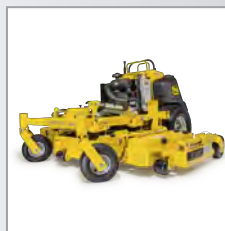
88" PRODUCTIVITY
54" CUT QUALITY



BOOST EFFICIENCY ON YOUR CURRENT PROPERTIES

The most versatile commercial mower on the market with a wide cutting width (88-inches) to handle large lawns, yet agile enough to match smaller mowers on uneven terrain and around tight obstacles. The heavy-duty 11-gauge welded steel deck features a 54-inch center deck and two pivoting wings. This provides the perfect combination for a professional cut quality while reducing the risk of scalping uneven terrain.

The unique design of the Super 88 allows professionals to do more in less time, with fewer people, while reducing operator fatigue.



HANDLE TIGHT SPACES

Productivity while maintaining the ability to maneuver in tight spaces.



88" WIDTH OF CUT

The cut quality of a 54" deck plus the productivity of an 88" deck



76" TRANSPORT WIDTH

Fits most trailers making it easy to transport from job-to-job.



OR



Find A Hustler Dealer
visit www.hustlerturf.com

ENGINE

Manufacturer	Vanguard
HP	88" deck: 36HP - Vanguard BigBlock™ 88" deck: 37HP - Vanguard BigBlock™ EFI Oil Guard (Per SAE J 1940)
Displacement	993cc
Cooling	Air cooled
Engine Warranty	5 year

DRIVE SYSTEM

Type	Dual hydrostatic
Pumps	Hydro-Gear 21cc
Wheel Motors	Parker TG0405
Speed	Up to 10 mph
Parking Brakes	Hand operated drum brakes

DECKS

Cutting Width	Rear discharge: 88"
Cutting Heights	2" - 5.5"
Deck Lift	Center deck: Electric actuator Wings: Manual lift with pull-out lift assist handles
Depth	5.5"
Blades	5
Blade Length	18.50"
Spindles	Ductile cast iron with steel shafts and sealed ball bearings
Drive	Electric PTO clutch
Construction	11ga. welded steel
Spindle Mounts	7 ga. doubler
Impact/Trim Areas	0.25 thick plate
Anti-scalp Wheels	Cast iron wing anti-scalp wheels with bearings with agriculture seals

* Number based on 80% efficiency. This rating is to account for actual mowing conditions including overlapping, turning and terrain.

** Specifications are subject to change without notice.

CONSTRUCTION

Frame	1.5" x 3" x .188" wall
Engine Plate	7 ga.
Front Caster Wheels	Mounted tapered wheel bearings and debris cap
Front Caster Forks	Fabricated 1/2" steel
Operator Pad	Bolstered operator pad

GENERAL

Fuel Capacity	13.9 gallons
Front Tire	13 x 6.5 - 6
Drive Tire	26 x 12 - 12
Wing Tire	11 x 4 semi-pneumatic

DIMENSIONS

Weight	2057 lbs
Height	50"
Length	84"
Width w/ chute up	91" w/ wings down 76" w/ wings up
Tire Width	57"

OPTIONAL ACCESSORIES

Mulch Kit
Mud Flap Kit
Light Kit

SUPER 88 | AT A GLANCE

- Widest and most productive commercial stand-on available
- Heavy duty fabricated frame – unmatched durability
- Exclusive SmoothTrak™ steering – responsive, precise control
- 88" stand-on with 76" transport width – easy trailering
- 13.9 gallon fuel tank
- Powerful commercial engine options



Visit hustlerturf.com
and try our compare products tool!