

MARLON®

Center Console Installation Guide



Tools required:

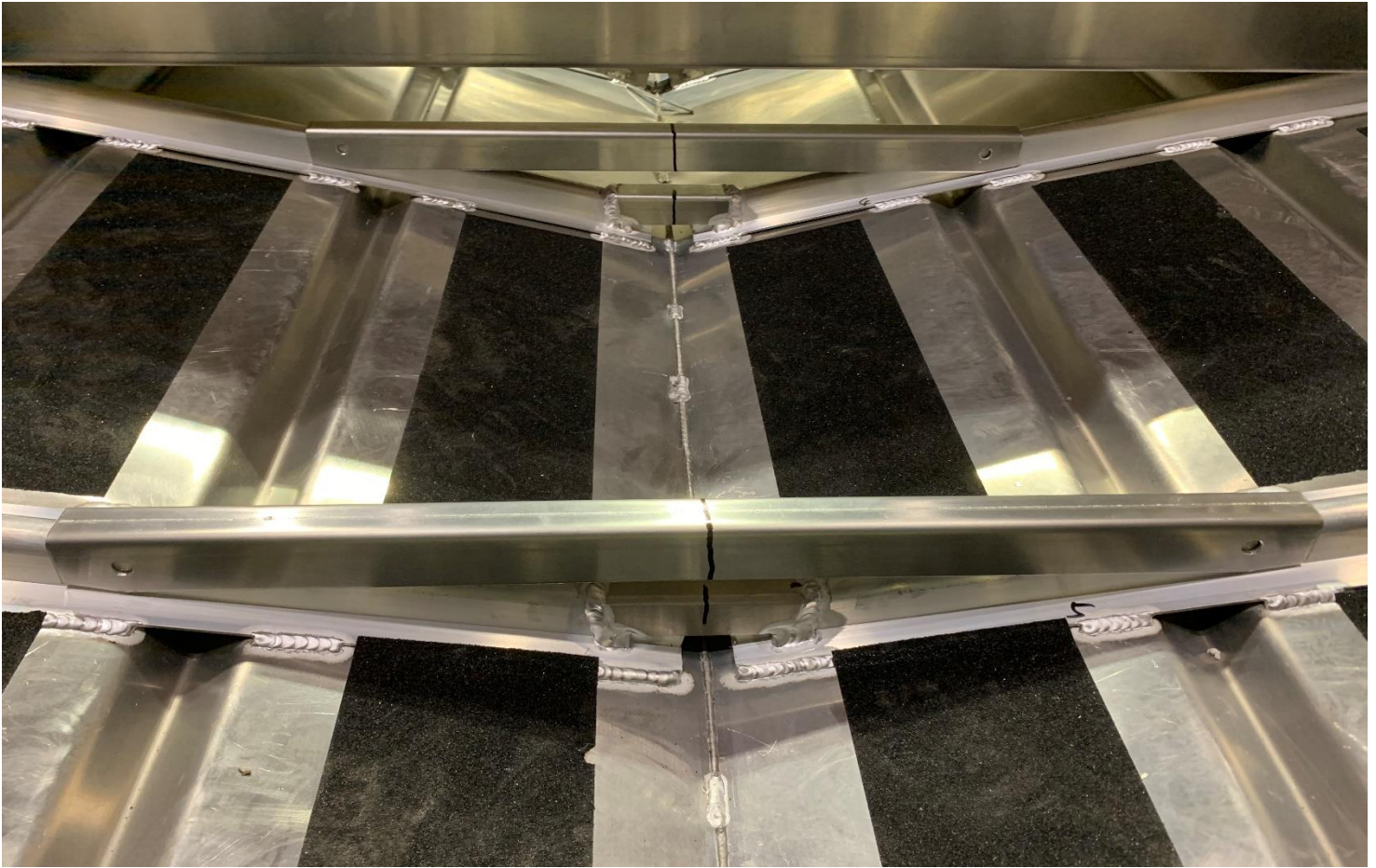
Drill with ¼" drill bit, Phillips Screw driver #2, 7/16 wrench, Tape Measure, Marker(Sharpie),

Please completely read all instructions before starting.

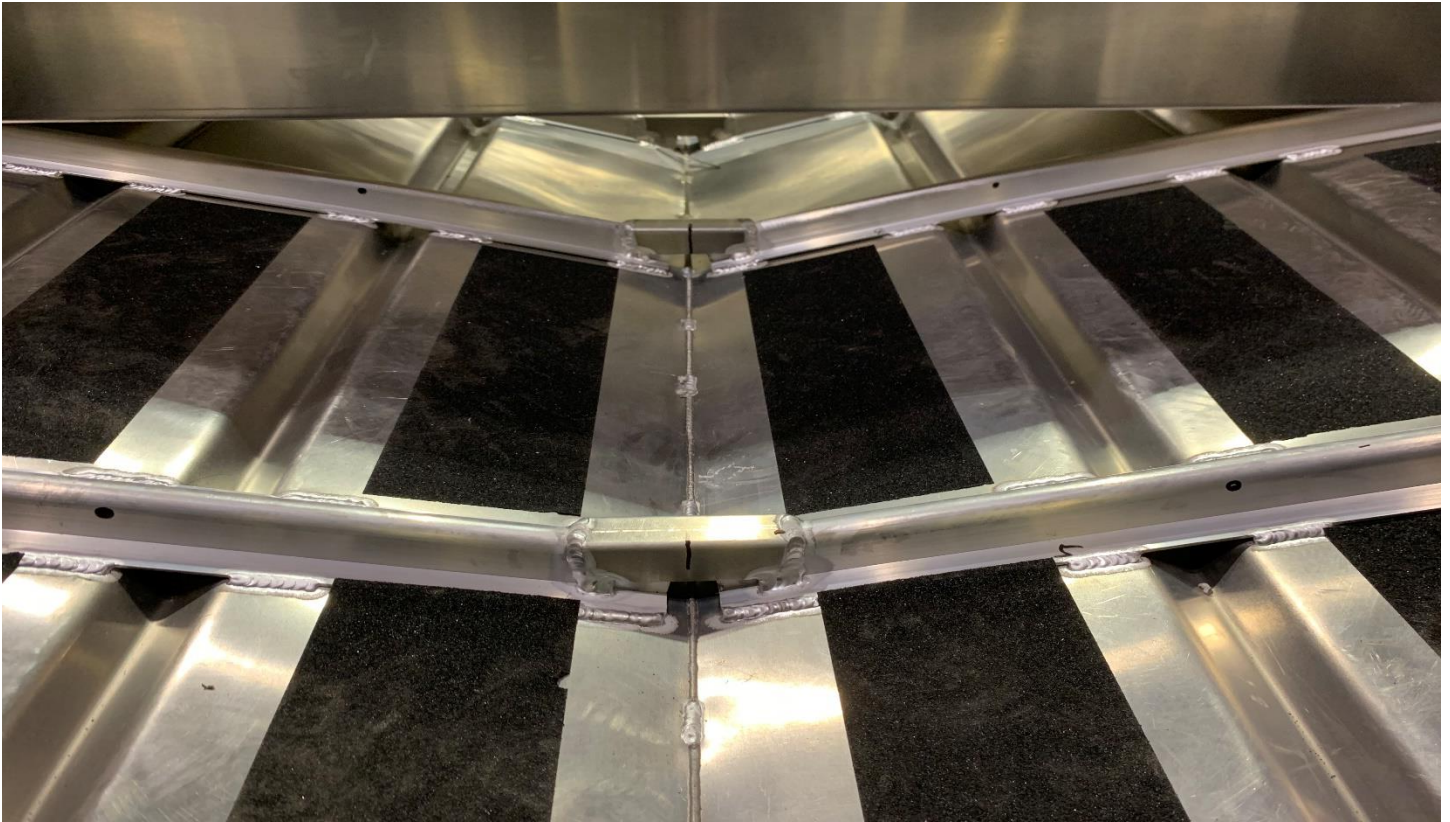
Center Console and parts in Kit:



1. Mark center of mounting crossmembers as well as center of boat rib. Place mounting crossmembers in boat and align marks. Make holes to drill in ribs.

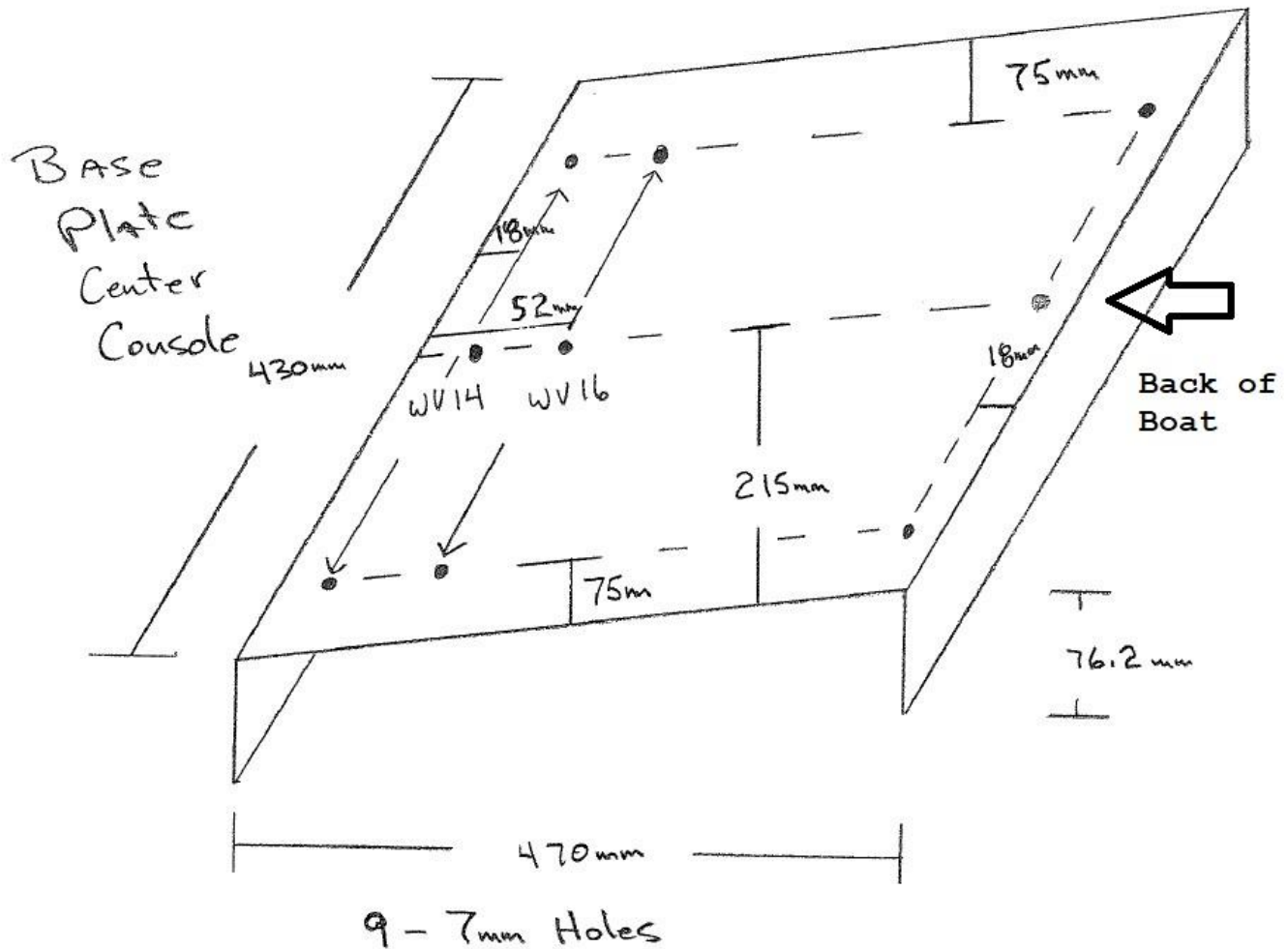


2. Remove mounting crossmembers, you should have 8 marker dots to use as drill pattern. Drill ribs from both sides. 8 holes in total (careful not to drill bottom of boat).

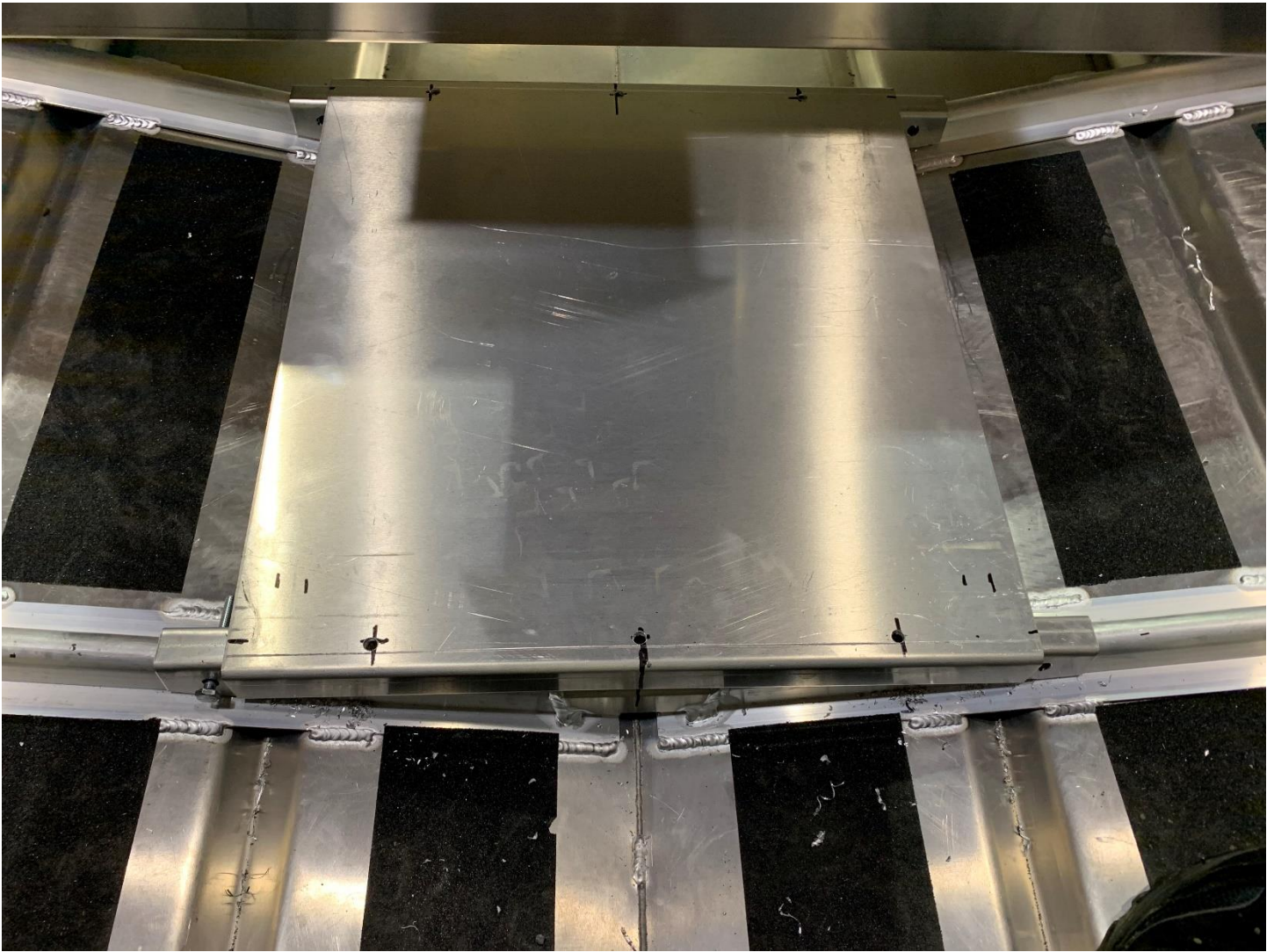


Finish by running the drill thru both holes. This will help align the holes.

3. Install the 4 – 1 ½" X ¼" dome top bolts (do not install nuts). Place the Console Base plate over the mounting crossmembers, align with marker on the rib. Drill required holes if you are mounting in WV 14 or WV 16 see drill diagram below.



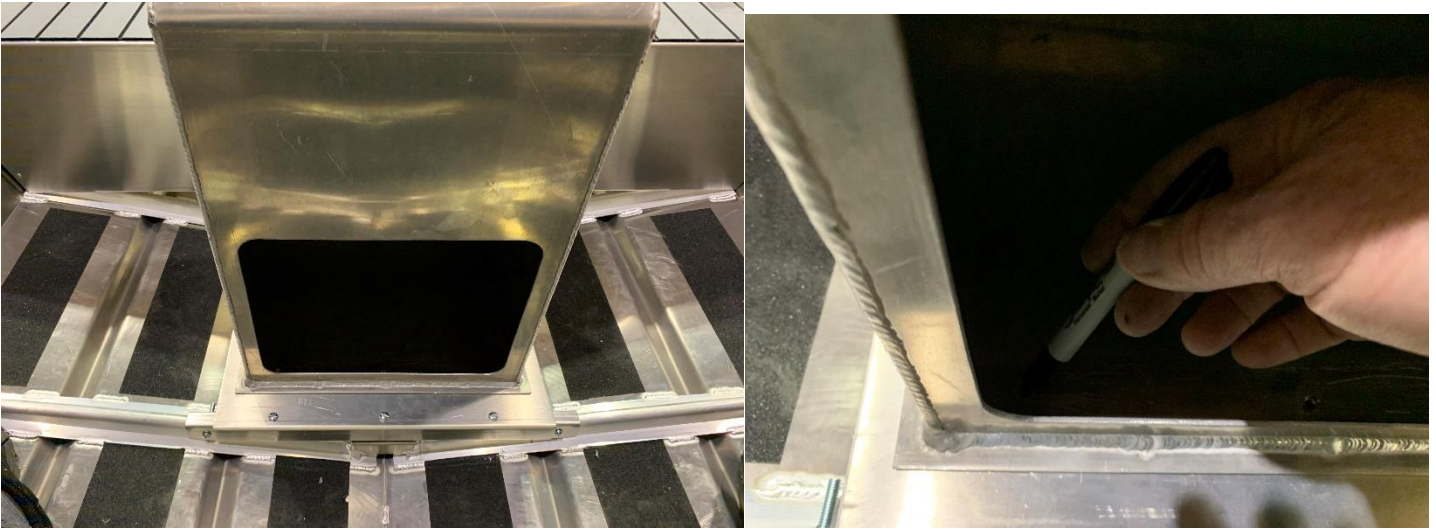
We recommend marking the base plate in position and drilling holes out of the boat, then place back in boat mark the holes to be drilled in the support crossmembers, then remove them from the boat to drill as well.



4. Now that you have drilled all the required holes in the mounting crossmembers and base plate it time to bolt them together, so take them both back out of the boat and use 6 of the 1 ¼" X ¼" bolts and nuts to bolt the base plate to the 2 mounting crossmembers.



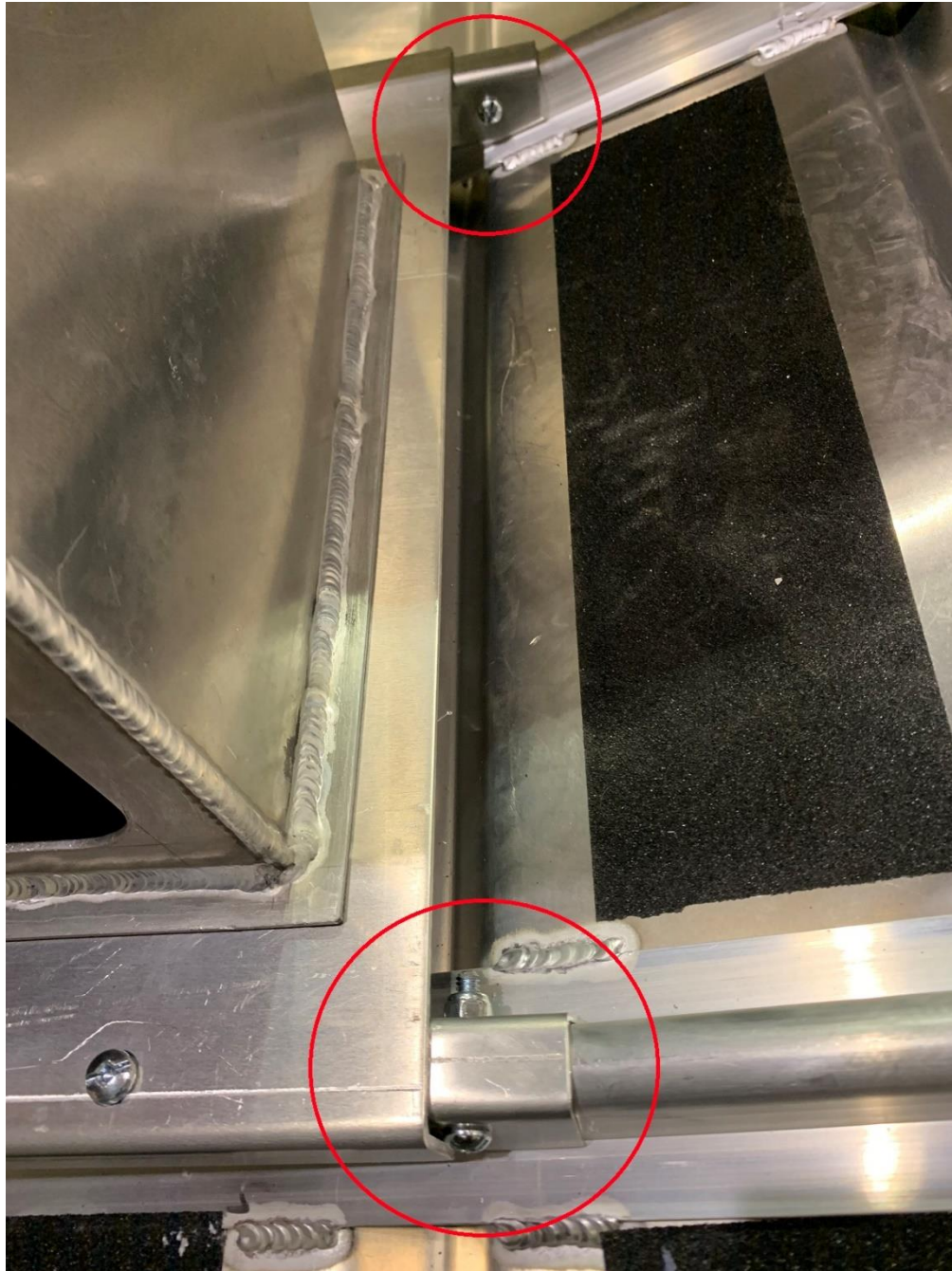
5. Now it's up to you where you want to bolt the console down. Sit on the seat and image you are cruising along on your new boat. Pay attention to your arm position, as well your feet and are your knees bent comfortably. Once you have decided what the optimal position is for you, simply double check with the tape measure that the console is sitting squarely on the base plate.



6. Now with your sharpie mark all 6 holes on the base plate. Now remove the console from the boat as well as the base plate with the mounting crossmembers. Drill the six holes in the base plate and bolt the console down to the base plate with the remaining 6 – 1 ¼" x ¼" dome top bolts with locking nuts.



7. Final step- now you have the console bolted to the base plate which has the mounting crossmembers bolted to the bottom. Now set the whole unit back in your boat. Line up the holes in the mounting crossmembers to the holes you drilled in the boat ribs. Use the 4 – 1 ½" X ¼" dome top bolts with lock nuts. Install so that the domes closest to the back of the boat face the back of the boat and the domes closet to the front of the front face the front of the boat. Make sure you tighten the nuts as tight as you can by hand(do not use a power tool).



You are now finished installing the center console in your boat.

Please follow the instructions supplied by the manufacturer for rigging your power head and controls.

Please enjoy your NEW MARLON boat.